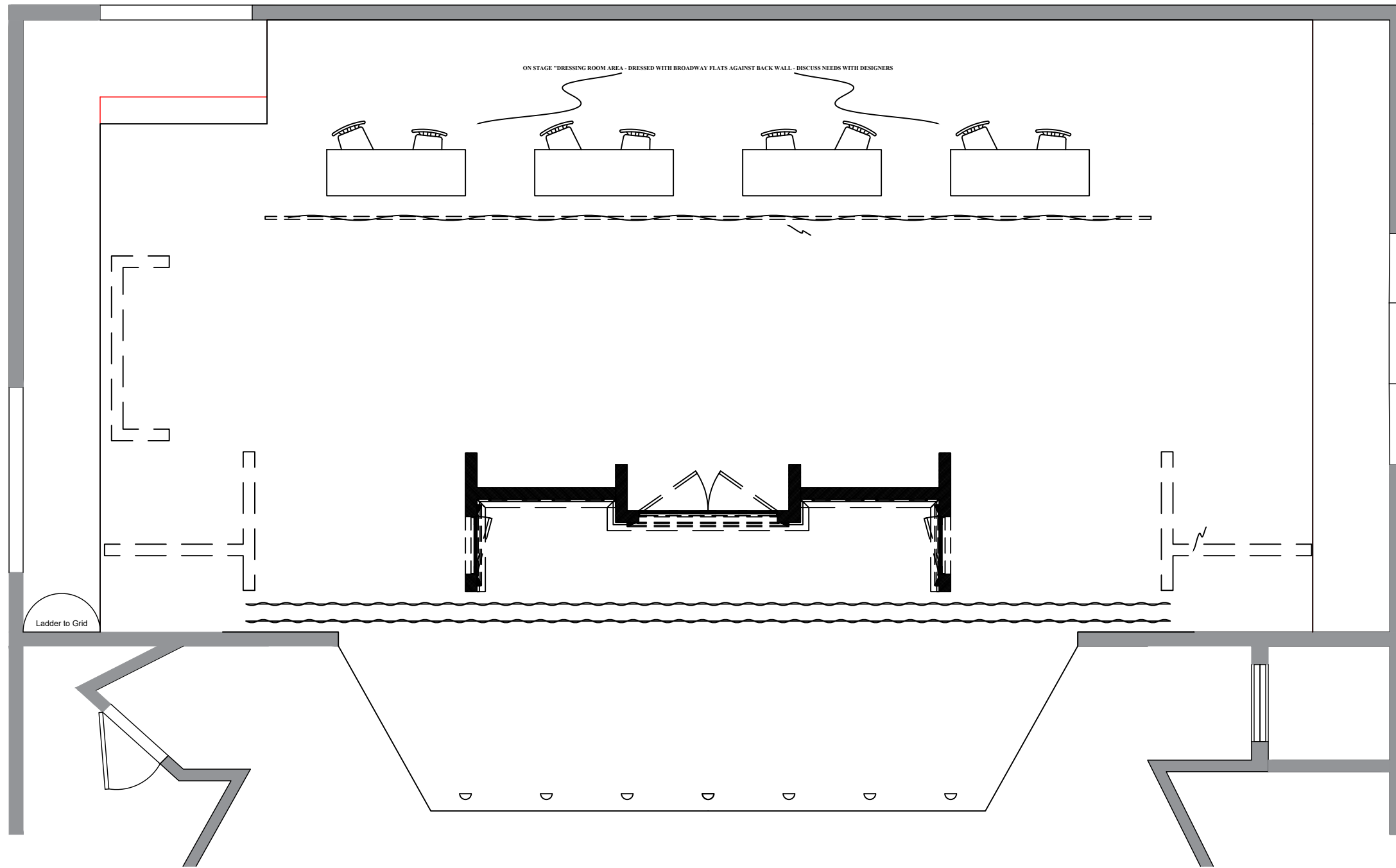


line set #	dist. from PL	Description
16	22'-9"	cyclorama
15	21'-3"	5 electric
14	20'-3"	
13	18'-0"	empty
12	15'-9"	4 electric
11	14'-9"	legs
10	14'-0"	border
9	11'-3"	3 electric
8	10'-3"	legs
7	9'-6"	border
6	6'-9"	2 electric
5	5'-9"	legs
4	5'-0"	border
3	2'-3"	1 electric
2	1'-3"	grand drape
1	0'-6"	valance
0	0'-0"	blaster line



PRIDE AND PREJUDICE

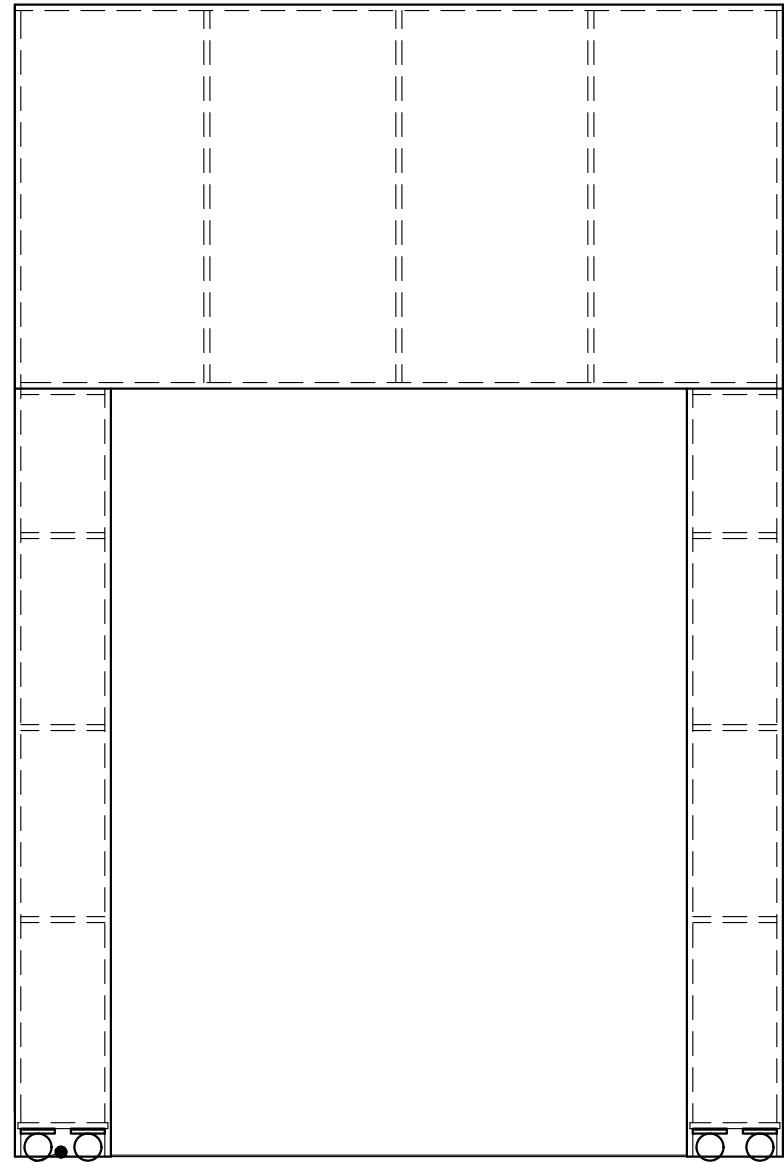
GROUND PLAN



Scenic Designer:
ALEXANDER WOODWARD
Director:
CHRISTOPHER EDWARDS
Technical Director:
FRAUSTO

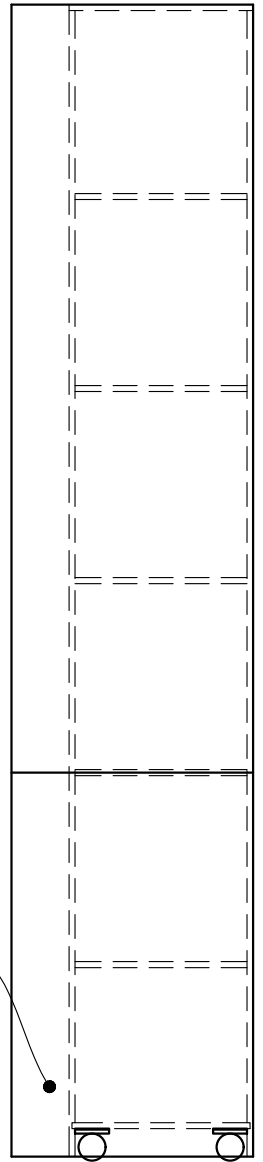
Date:
7/5/18
Scale:
3/16"=1'-0"

1
of
#



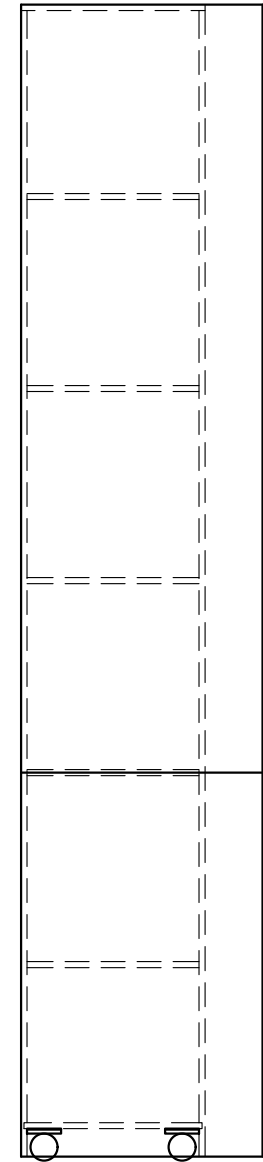
LAUAN OVERHANG

FRONT VIEW
WALL A




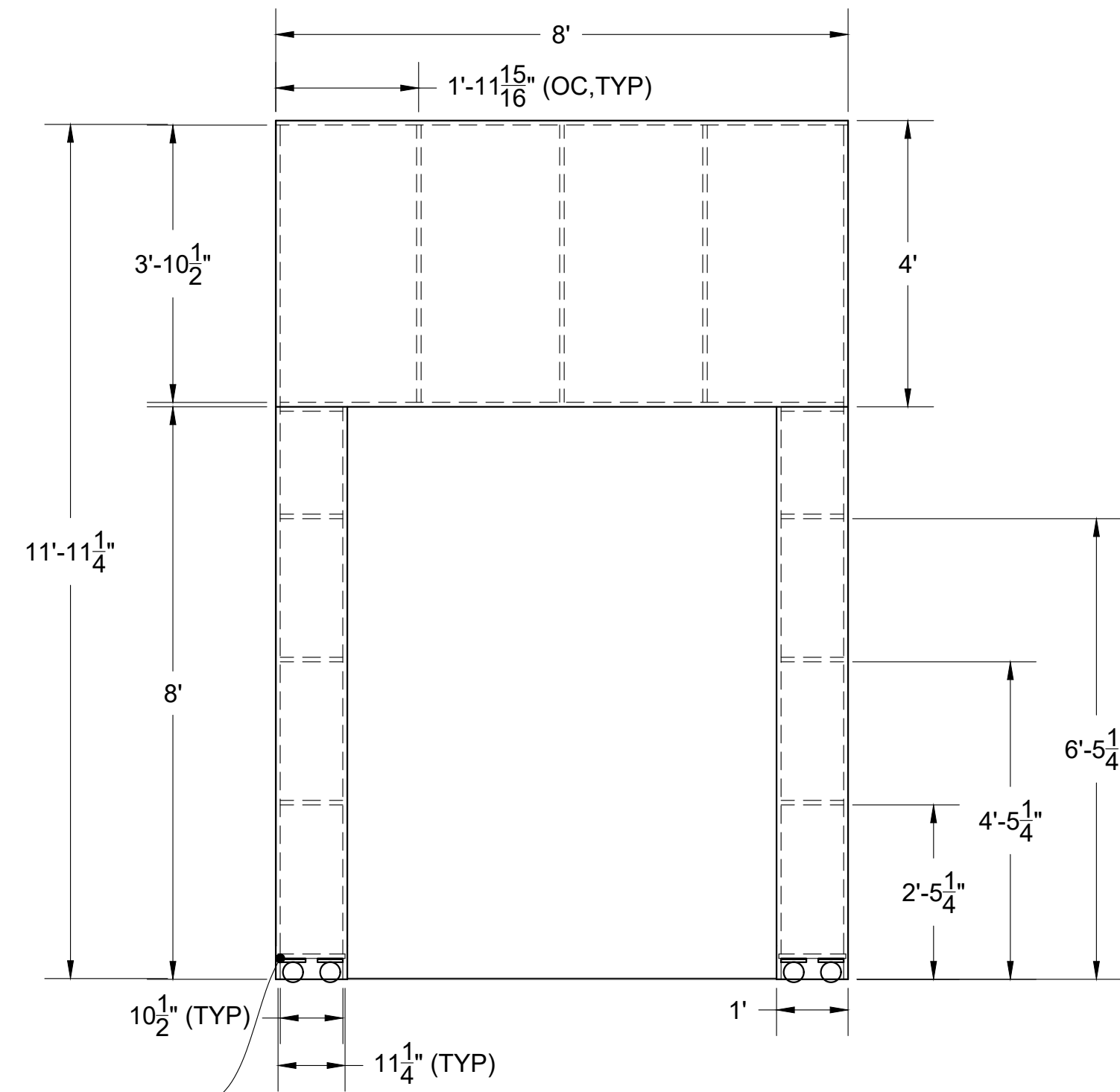
LAUAN
OVERHANG

FRONT VIEW
WALLS B & C



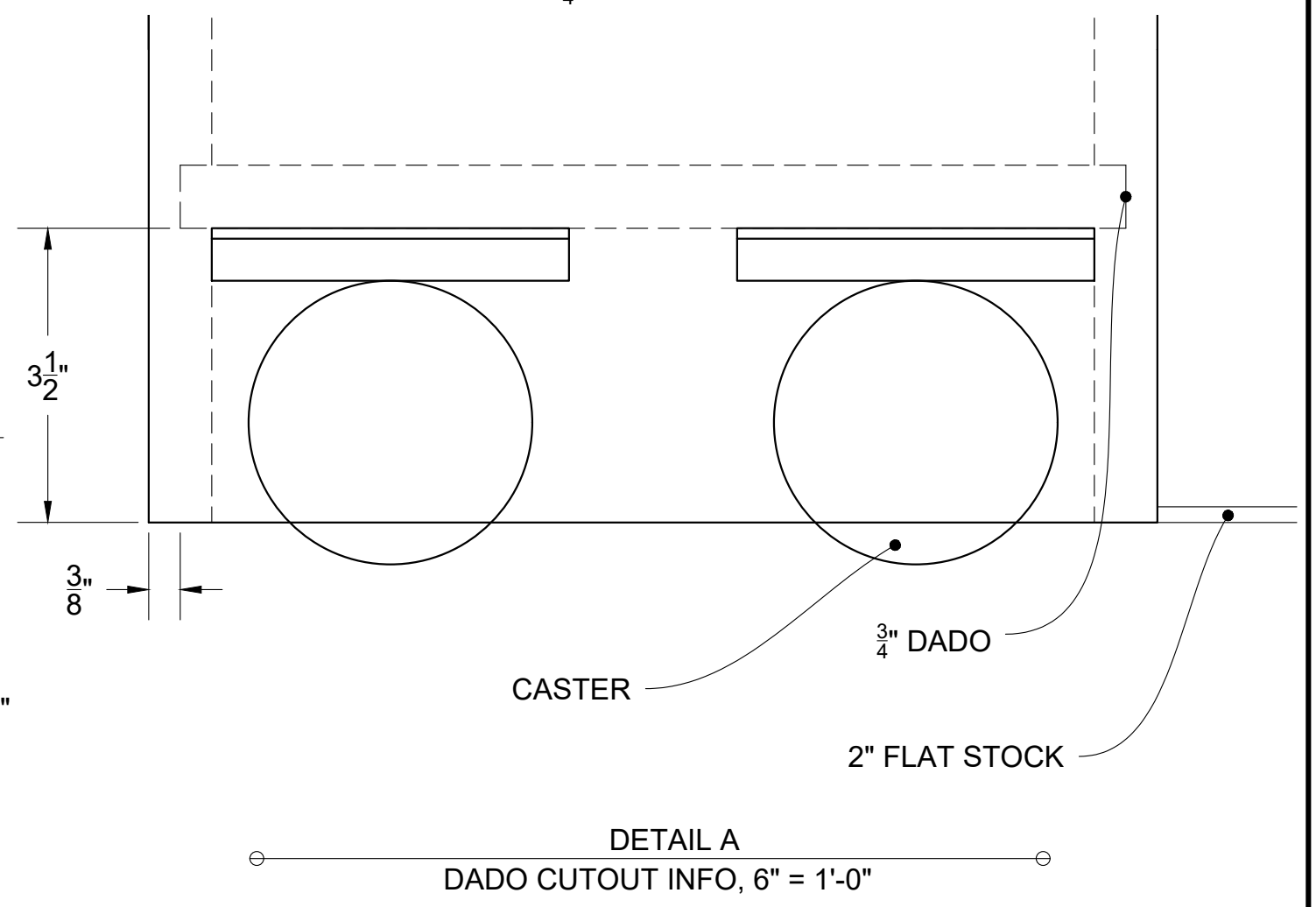
PLAN VIEW
CONSTRUCTED

PRIDE AND PREJUDICE		
CENTER WALL OVERVIEW		
 DORSET THEATRE FESTIVAL <small>PLAY IN VERMONT</small>	Scenic Designer: ALEXANDER WOODWARD	Date: 7/5/18
	Director: CHRISTOPHER EDWARDS	Scale: 1/2"=1'-0"
	Technical Director: FRAUSTO	2 of #




SEE DETAIL A
 FRONT VIEW
 WALL A, $\frac{1}{2}'' = 1'-0''$

- NOTES:
- USE 1x8 NOMINAL FOR FRAME CONSTRUCTION
 - CAP WITH LAUAN
 - USE GLUE AND 1- $\frac{1}{2}''$ NCS FOR FRAME ASSEMBLY
 - ADD CASTERS AND STAND ON HEAD AFTER FINISHED
 - DADO IS JUST FOR BOTTOM TOGGLE
 - USE $\frac{1}{4}''$ HEX BOLTS WITH LOCK WASHERS FOR CASTERS

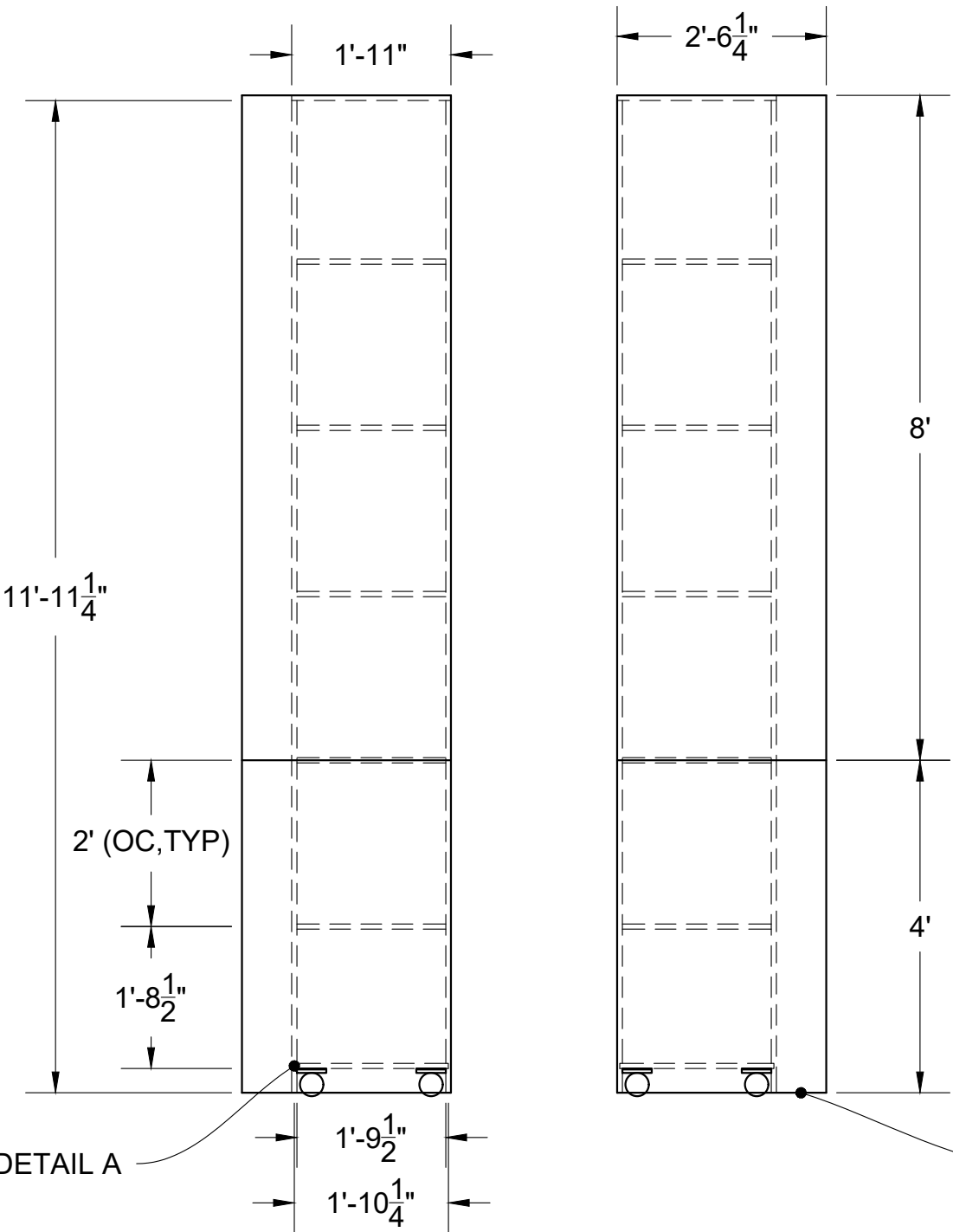


DETAIL A
 DADO CUTOUT INFO, 6" = 1'-0"

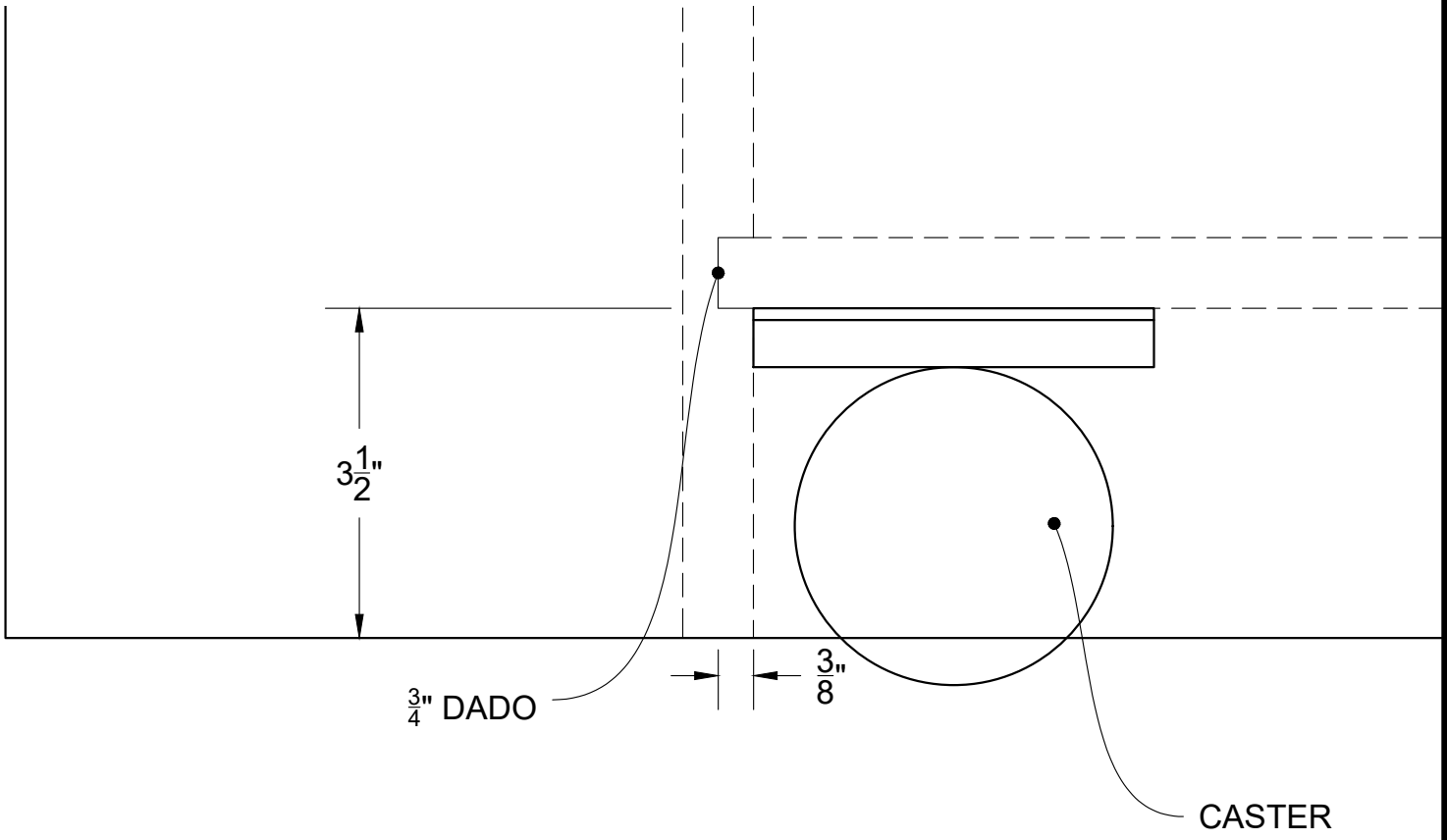
PRIDE AND PREJUDICE		
WALL UNIT A		
 DORSET THEATRE FESTIVAL PLAY IN VERMONT	Scenic Designer: ALEXANDER WOODWARD	Date: 7/5/18
	Director: CHRISTOPHER EDWARDS	Scale: VARIES
	Technical Director: FRAUSTO	3 of #

NOTES:


- USE 1x8 NOMINAL FOR FRAME CONSTRUCTION
- CAP WITH LAUAN
- USE GLUE AND 1-1/2" NCS FOR FRAME ASSEMBLY
- ADD CASTERS AND STAND ON HEAD AFTER FINISHED
- DADO IS JUST FOR BOTTOM TOGGLE
- USE 1/4" HEX BOLTS WITH LOCK WASHERS FOR CASTERS

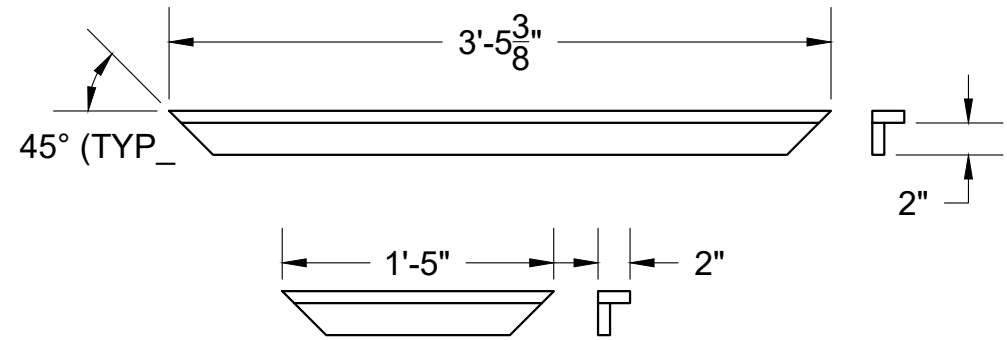


FRONT VIEW
WALL B & C, 1/2" = 1'-0"



DETAIL A
DADO CUTOUT INFO, 6" = 1'-0"

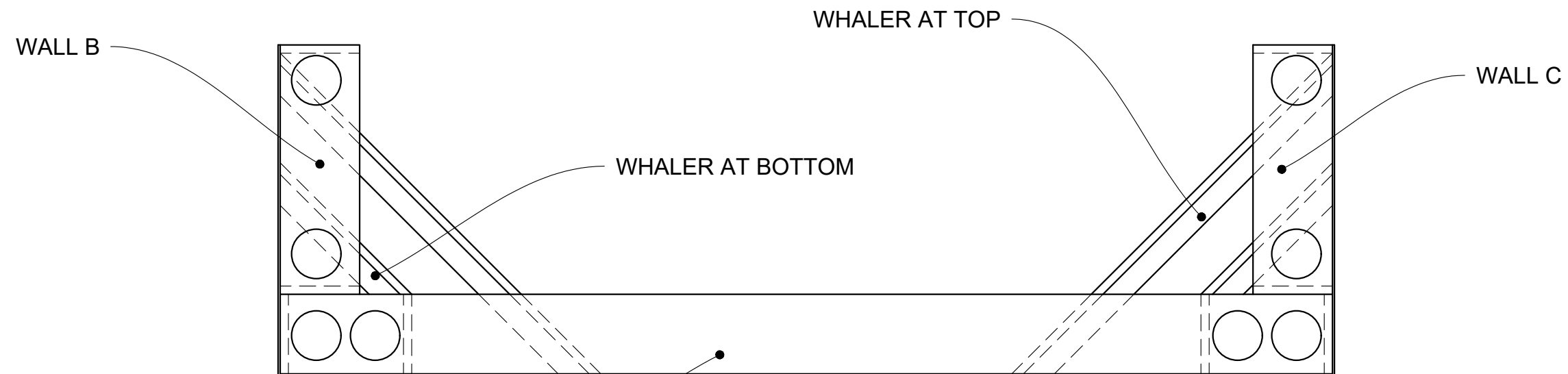
PRIDE AND PREJUDICE		
WALL UNIT B & C		
 <p>DORSET THEATRE FESTIVAL PLAY IN VERMONT</p>	Scenic Designer: ALEXANDER WOODWARD	Date: 7/5/18
	Director: CHRISTOPHER EDWARDS	Scale: VARIES
	Technical Director: FRAUSTO	<div style="font-size: 2em; font-weight: bold;">4</div> of #



WHALERS
BUILD 2 OF EACH

NOTES:

- LAUAN ON WALL B & C WILL CAP THE SIDES OF WALL A
- USE 2" SCREWS TO ATTACH WALL B & C TO THE TOGGLES OF WALL A
- USE 1/4" BRADS AND GLUE TO ATTACH OVERHANGING LAUAN OF WALL B & C TO WALL A
- ATTACH THE WHALERS WITH APPROPRIATE SCREW LENGTH AS INDICATED
- THERE IS 2" FLAT STOCK ON THE BOTTOM OF WALL A SPANNING THE WIDTH OF THE DOOR (ASK TD FOR DETAILS BEFORE FINISHING)



WALL A

PLAN VIEW
ASSEMBLY OF WALL CENTER WALL

PRIDE AND PREJUDICE

ASSEMBLY OF CENTER WALL



Scenic Designer:
ALEXANDER WOODWARD

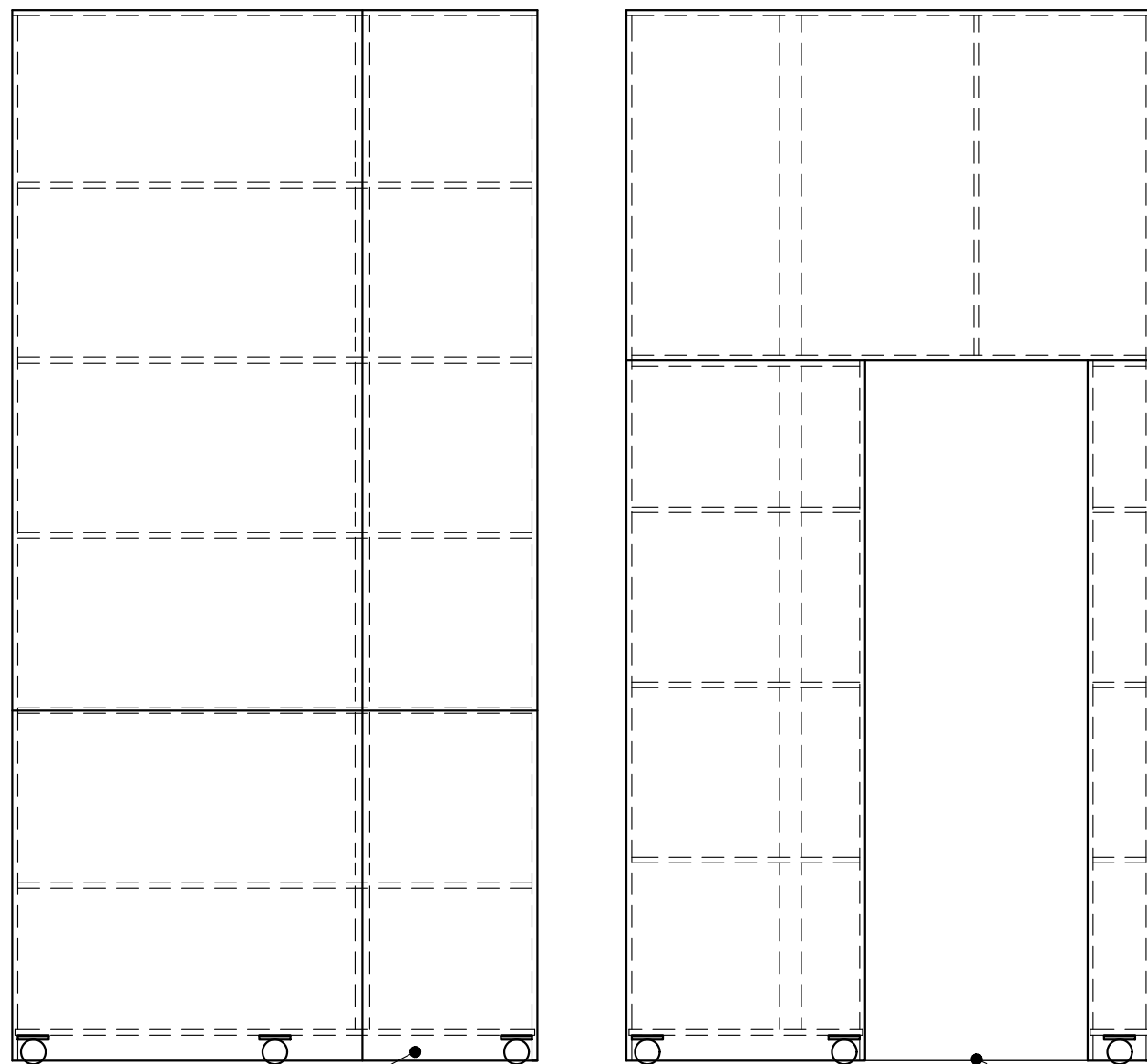
Director:
CHRISTOPHER EDWARDS

Technical Director:
FRAUSTO

Date:
7/5/18

Scale:
VARIES

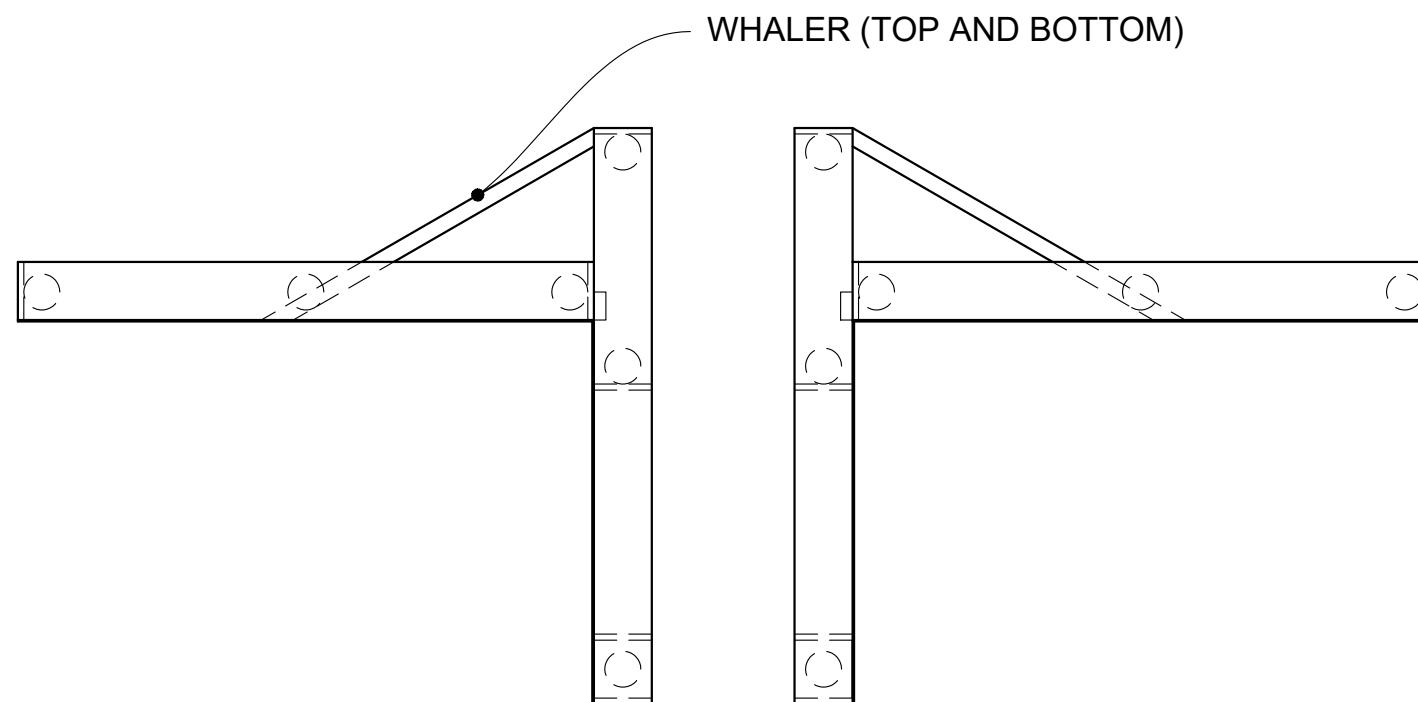
5
of
#



LAUAN OVERHANG

FLAT STOCK

FRONT VIEW
WALLS D, E, F, & G



WHALER (TOP AND BOTTOM)

PLAN VIEW
CONSTRUCTED

PRIDE AND PREJUDICE

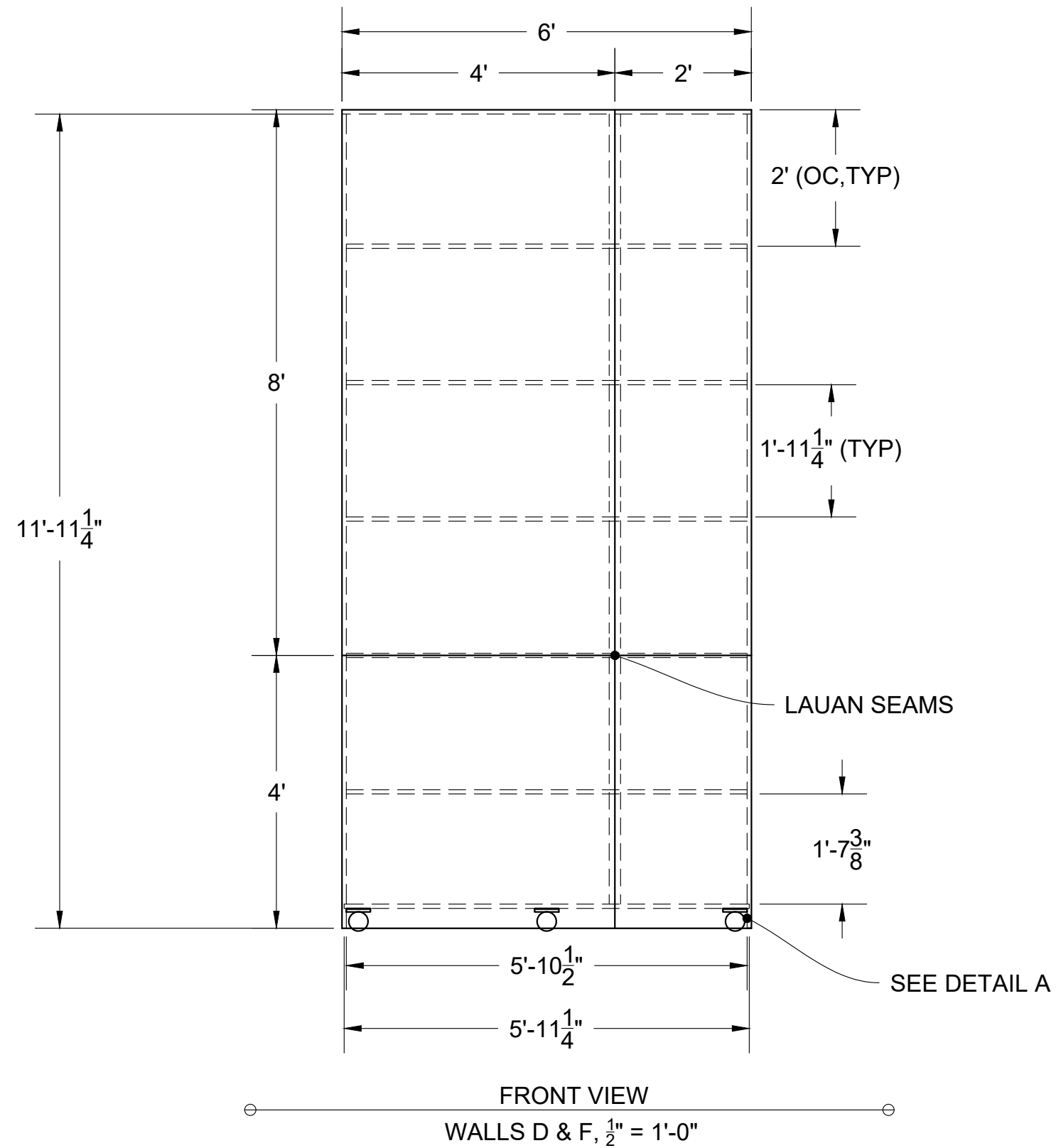
T-WALLS OVERVIEW (BUILD 2)



Scenic Designer:
ALEXANDER WOODWARD
Director:
CHRISTOPHER EDWARDS
Technical Director:
FRAUSTO

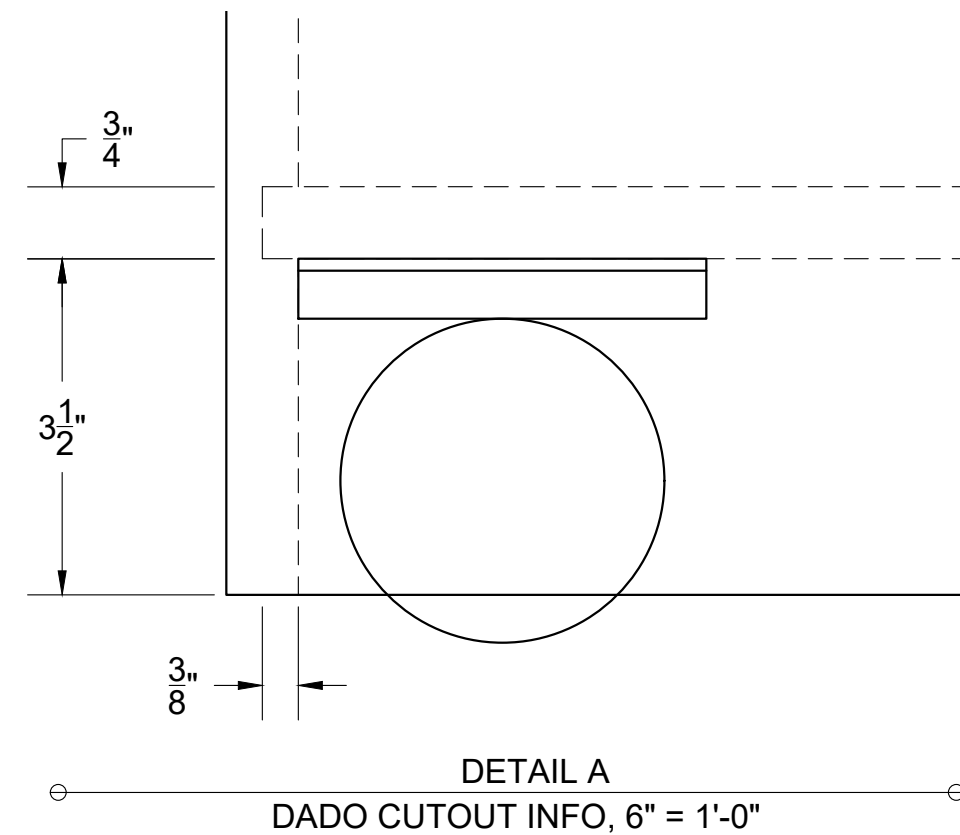
Date:
7/5/18
Scale:
1/2" = 1'-0"

6
of
#



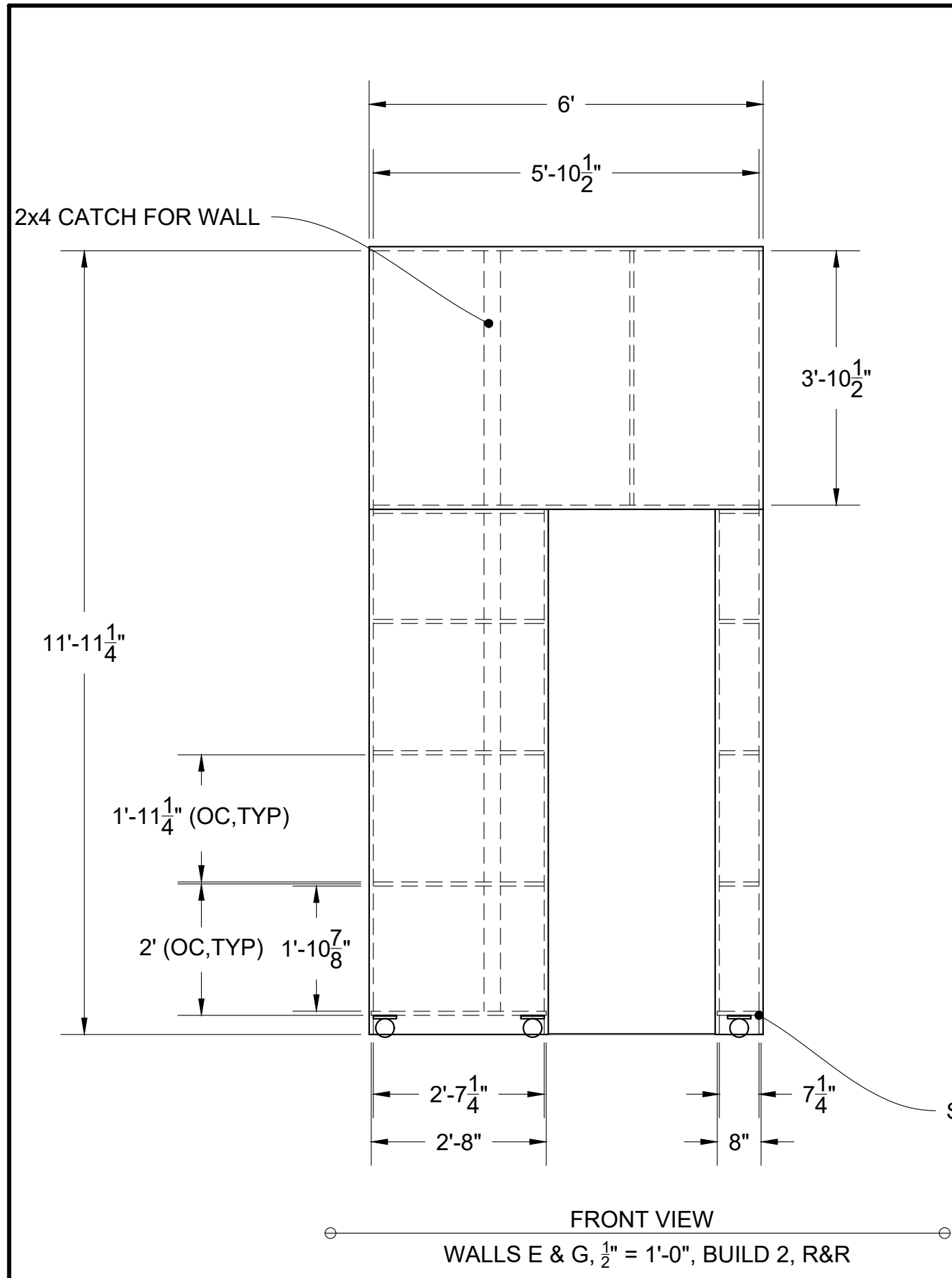
NOTES:

- USE 1x8 NOMINAL FOR FRAME CONSTRUCTION
- CAP WITH LAUAN
- VERTICAL SEAM CATCHES ARE RIPPED TO 2"
- USE GLUE AND 1- $\frac{1}{2}''$ NCS FOR ASSEMBLY
- ADD CASTERS AND STAND ON HEAD AFTER FINISHED
- DADO IS JUST FOR BOTTOM TOGGLE
- USE $\frac{1}{4}''$ HEX BOLTS WITH LOCK WASHERS FOR CASTERS
- CENTER CASTER IS CENTERED AT 3'-0"
- BUILD 2, R & R



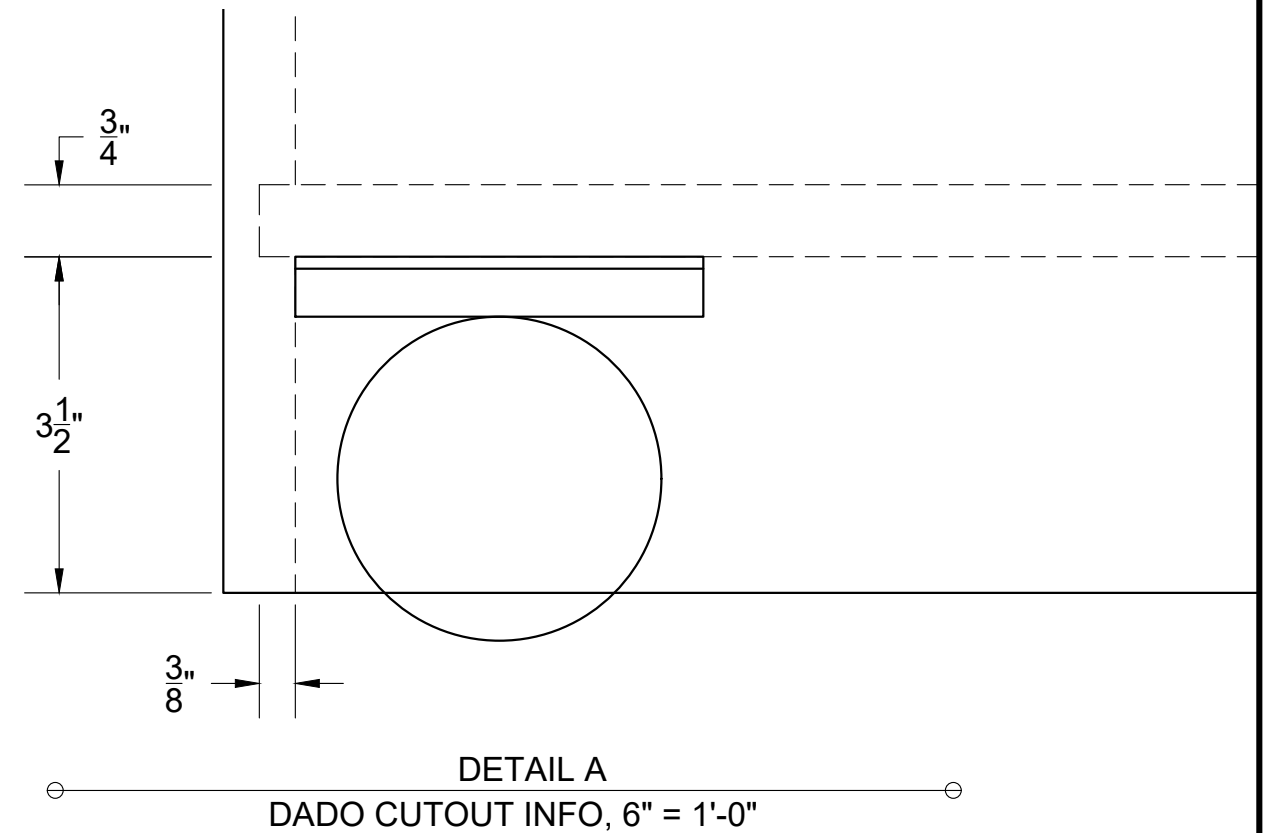
PRIDE AND PREJUDICE
T-WALLS OVERVIEW


 <p>DORSET THEATRE FESTIVAL PLAY IN VERMONT</p>	Scenic Designer: ALEXANDER WOODWARD	Date: 7/5/18	<p>7 of #</p>
	Director: CHRISTOPHER EDWARDS	Scale: VARIES	
	Technical Director: FRAUSTO		

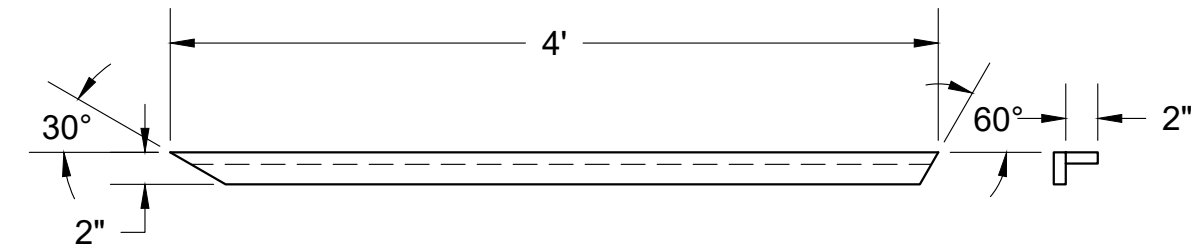


NOTES:

- USE 1x8 NOMINAL FOR FRAME CONSTRUCTION
- CAP WITH LAUAN
- VERTICAL WALL CATCHES ARE 2x4
- USE GLUE AND 1-1/2" NCS FOR ASSEMBLY
- ADD CASTERS AND STAND ON HEAD AFTER FINISHED
- DADO IS JUST FOR BOTTOM TOGGLE
- USE 1/4" HEX BOLTS WITH LOCK WASHERS FOR CASTERS
- BUILD 2, R & R



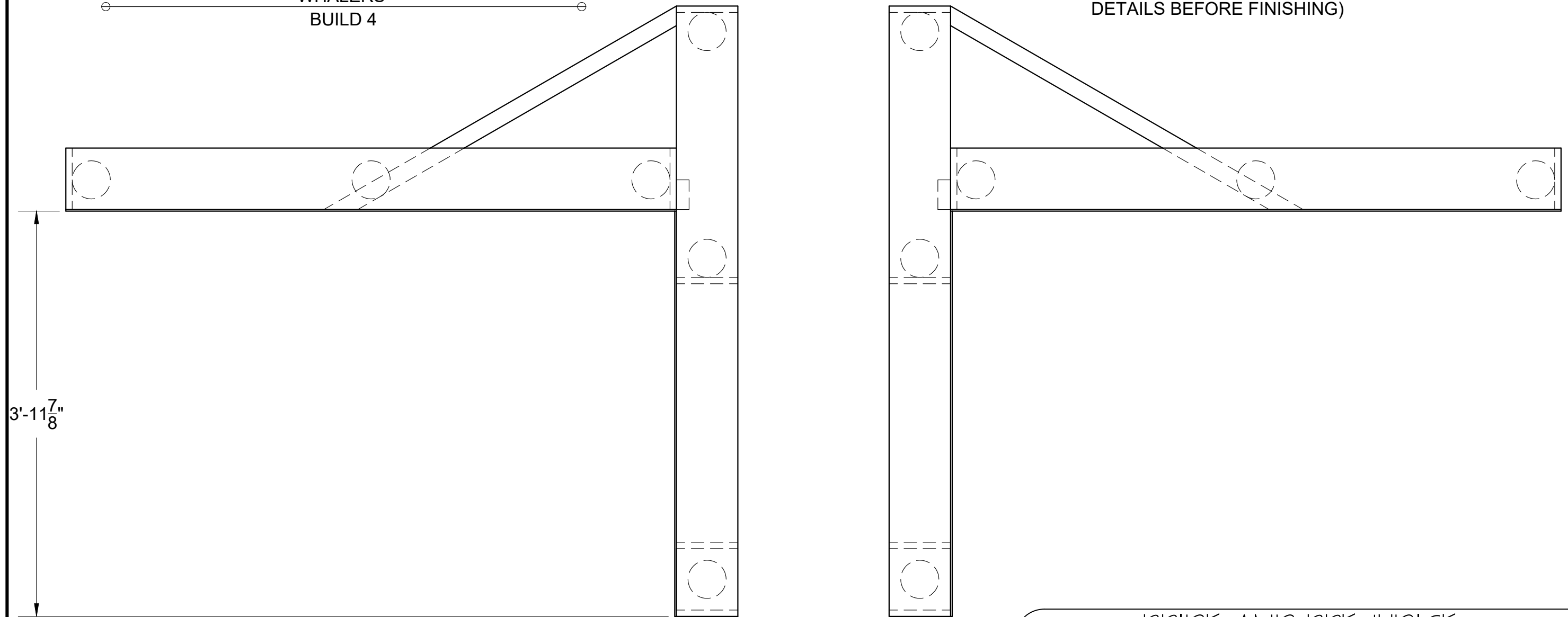
PRIDE AND PREJUDICE		
T-WALLS OVERVIEW		
 DORSET THEATRE FESTIVAL PLAY IN VERMONT	Scenic Designer: ALEXANDER WOODWARD	Date: 7/5/18
	Director: CHRISTOPHER EDWARDS	Scale: VARIES
	Technical Director: FRAUSTO	<div style="font-size: 2em; font-weight: bold;">8</div> of #



WHALERS
BUILD 4

NOTES:


- SCREW WALL D TO WALL E WITH 2" SCREWS (MAKING SURE TO FOLLOW THE 3'-11 ⁷/₈" ALL THE WAY DOWN
- RIP 1x FOR WHALERS TO 2"
- ATTACH WHALERS TO THE TOP AND BOTTOM
- BUILD SECOND ONE IN REVERSE
- THERE IS 2" FLAT STOCK ON THE BOTTOM OF WALL A SPANNING THE WIDTH OF THE DOOR (ASK TD FOR DETAILS BEFORE FINISHING)

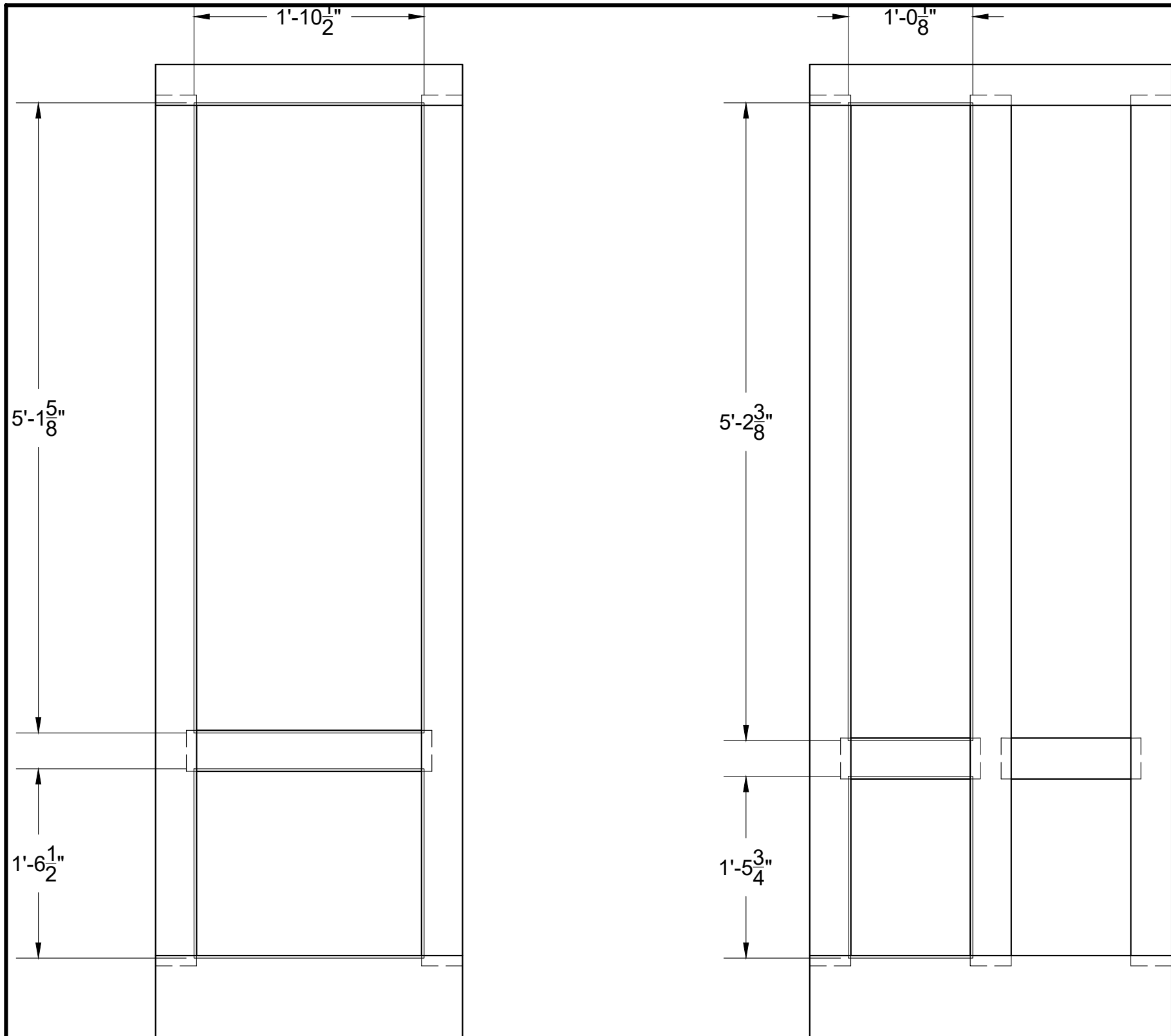


PLAN VIEW
ASSEMBLY OF WALLS

PRIDE AND PREJUDICE

ASSEMBLY OF T-WALLS

 <p>DORSET THEATRE FESTIVAL PLAY IN VERMONT</p>	<p>Scenic Designer: ALEXANDER WOODWARD</p>	<p>Date: 7/5/18</p>	<p>9 of #</p>
	<p>Director: CHRISTOPHER EDWARDS</p>	<p>Scale: VARIES</p>	
	<p>Technical Director: FRAUSTO</p>		




○ ————— FRONT VIEW ————— ○

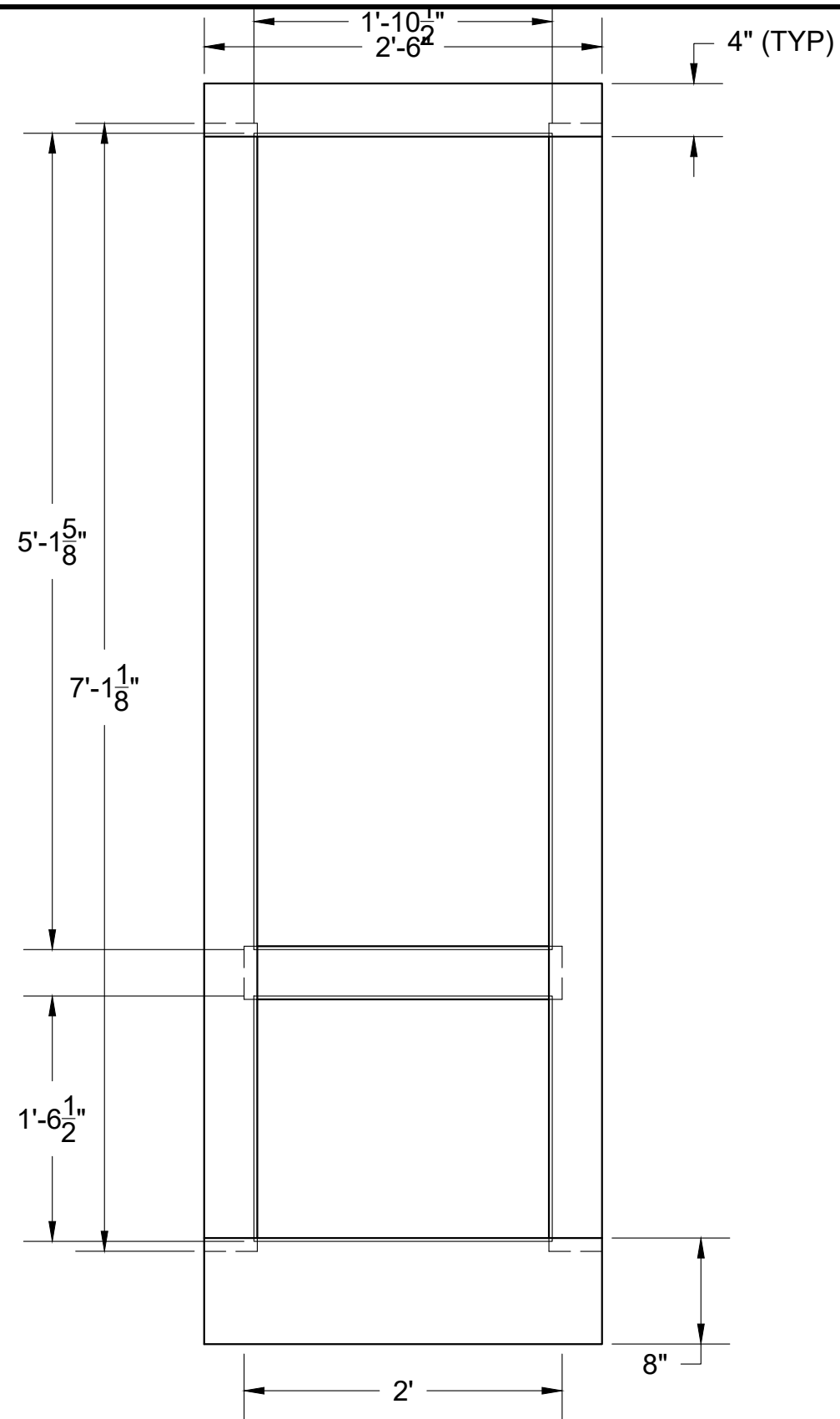
NOTES:

- BUILD TWO OF EACH STYLE
- DOORS WILL BE BUILT OUT OF 2x4x6 AND 2x4x10 RIPPED DOWN ACCORDING TO DIMENSIONS (BE SURE TO RIP BOTH SIDES SO YOU GET FOUR SHARP CORNERS)
- ASK TD VERIFYING QUESTIONS

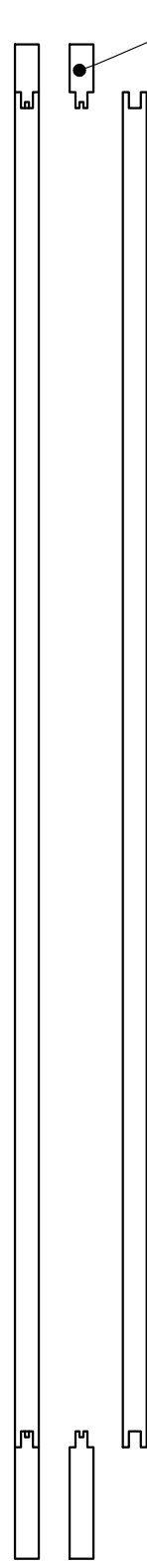
PRIDE AND PREJUDICE

DOORS OVERVIEW

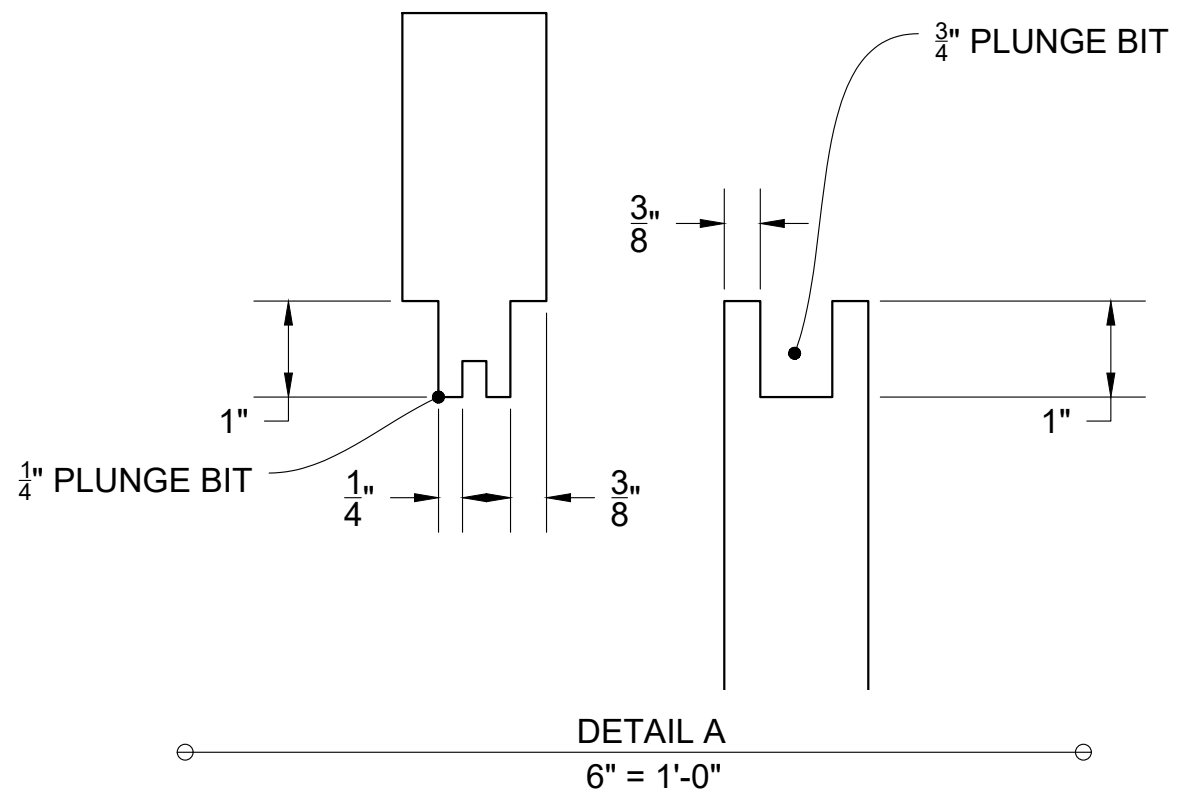
 <p>DORSET THEATRE FESTIVAL PLAY IN VERMONT</p>	<p>Scenic Designer: ALEXANDER WOODWARD</p>	<p>Date: 7/5/18</p>	<p>10 of #</p>
	<p>Director: CHRISTOPHER EDWARDS</p>	<p>Scale: VARIES</p>	
	<p>Technical Director: FRAUSTO</p>		



FRONT AND SIDE VIEW
ASSEMBLY OF WALLS



SEE DETAIL A



DETAIL A

6" = 1'-0"

NOTES:

- BUILD TWO
- MAKE SURE TO RIP ALL PARTS THAT NEED THE ONE BIT/DIMENSION BEFORE MOVING ON TO THE NEXT PART
- ASSEMBLE WITH GLUE AND 1" BRADS
- CLAMP EACH OVER NIGHT AND MAKE SURE IT'S SQUARE BEFORE IT SETS
- ASK TD FOR VERIFYING QUESTIONS

PRIDE AND PREJUDICE

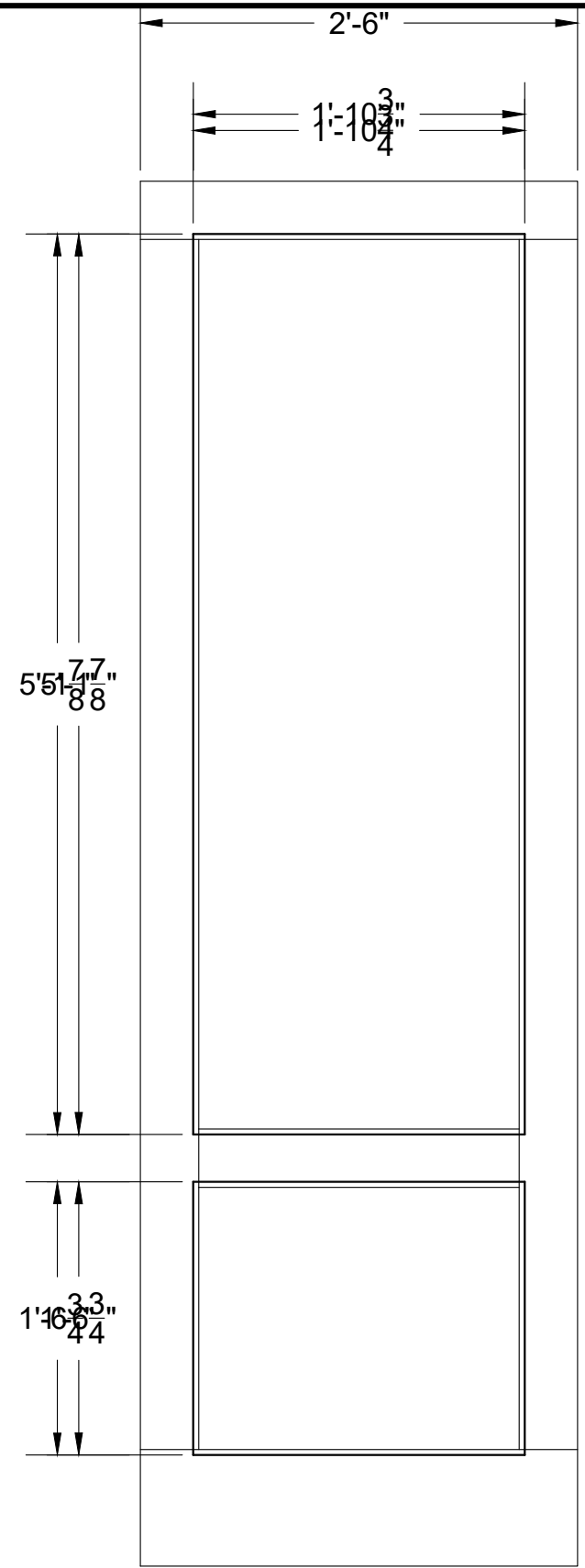
SIDE DOOR 2X



Scenic Designer:
ALEXANDER WOODWARD
Director:
CHRISTOPHER EDWARDS
Technical Director:
FRAUSTO

Date:
7/5/18
Scale:
VARIES


11
of
#

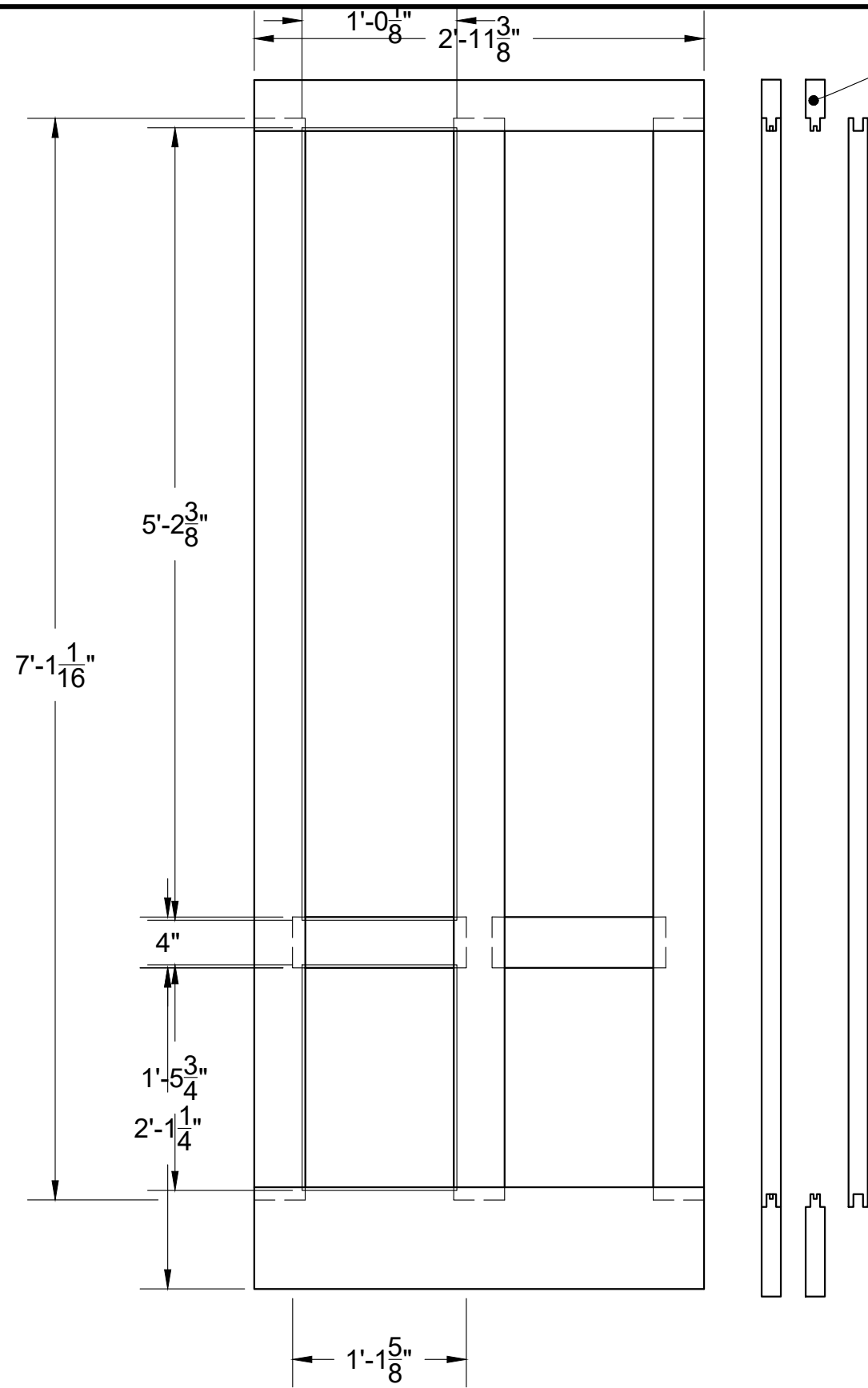


NOTES:

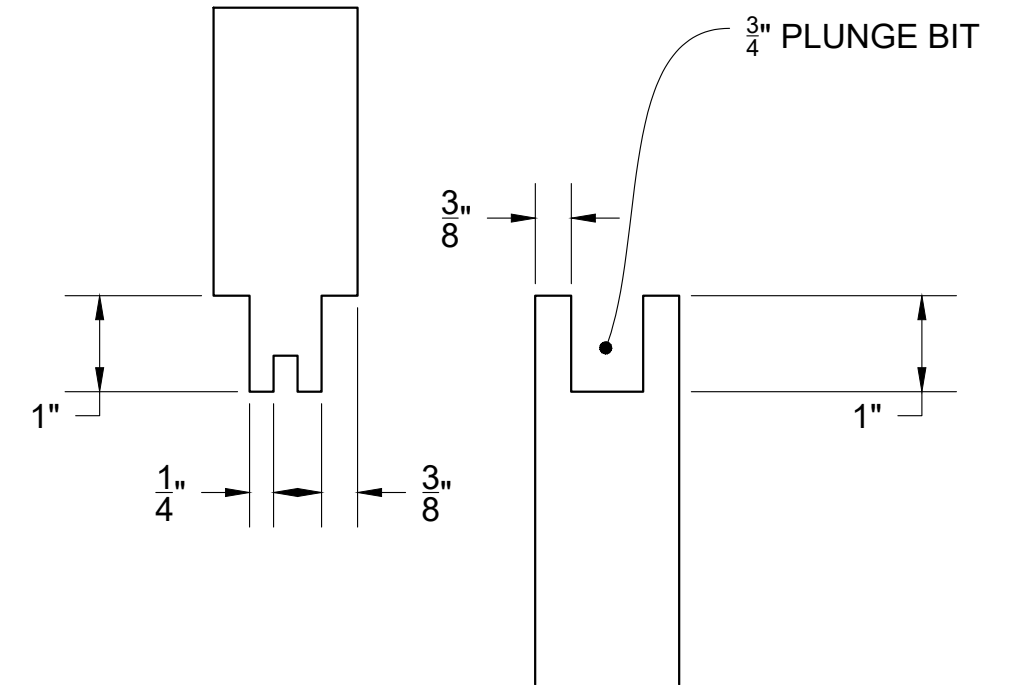
- BUILD TWO
- RIP LAUAN ACCORDING TO MEASUREMENTS
- SLOT IT INTO GROOVES BEFORE FINAL ASSEMBLY
- GLUE AND USE ³/₄" BRADS

FRONT VIEW
ASSEMBLY OF WALLS

PRIDE AND PREJUDICE		
SIDE DOOR LAUAN		
 DORSET THEATRE FESTIVAL PLAY IN VERMONT	Scenic Designer: ALEXANDER WOODWARD	Date: 7/5/18
	Director: CHRISTOPHER EDWARDS	Scale: VARIES
	Technical Director: FRAUSTO	<div style="font-size: 2em; font-weight: bold;">12</div> of #



SEE DETAIL A




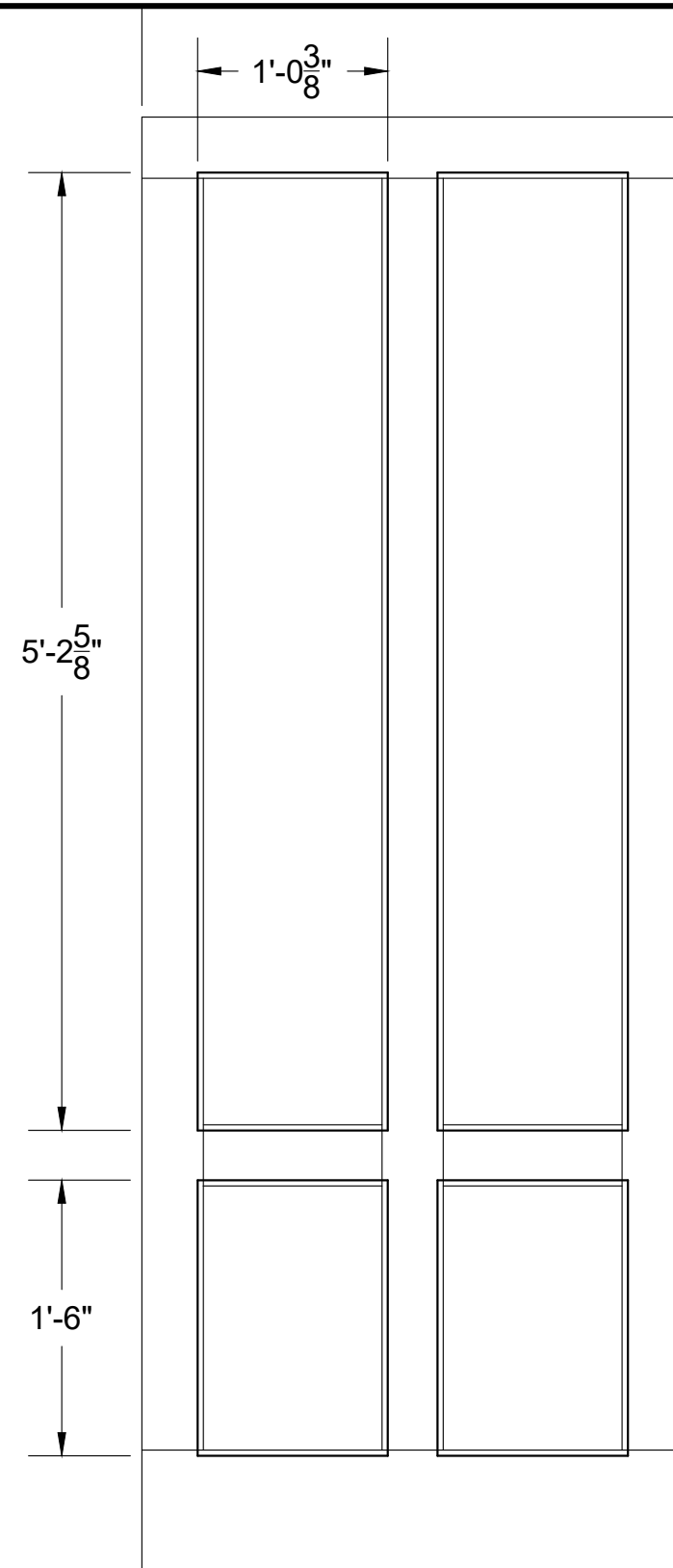
NOTES:

- BUILD TWO
- MAKE SURE TO RIP ALL PARTS THAT NEED THE ONE BIT/DIMENSION BEFORE MOVING ON TO THE NEXT PART
- ASSEMBLE WITH GLUE AND 1" BRADS
- CLAMP EACH OVER NIGHT AND MAKE SURE IT'S SQUARE BEFORE IT SETS
- ASK TD FOR VERIFYING QUESTIONS

FRONT AND SIDE VIEW
ASSEMBLY OF WALLS

PRIDE AND PREJUDICE
CENTER DOOR 2X

 <p>DORSET THEATRE FESTIVAL PLAY IN VERMONT</p>	Scenic Designer: ALEXANDER WOODWARD	Date: 7/5/18	<p>13 of #</p>
	Director: CHRISTOPHER EDWARDS	Scale: VARIES	
	Technical Director: FRAUSTO		



FRONT AND SIDE VIEW
ASSEMBLY OF WALLS

NOTES:

- BUILD TWO
- RIP LAUAN ACCORDING TO MEASUREMENTS
- SLOT IT INTO GROOVES BEFORE FINAL ASSEMBLY
- GLUE AND USE $\frac{3}{4}$ " BRADS

PRIDE AND PREJUDICE

CENTER DOOR LAUAN



Scenic Designer:
ALEXANDER WOODWARD

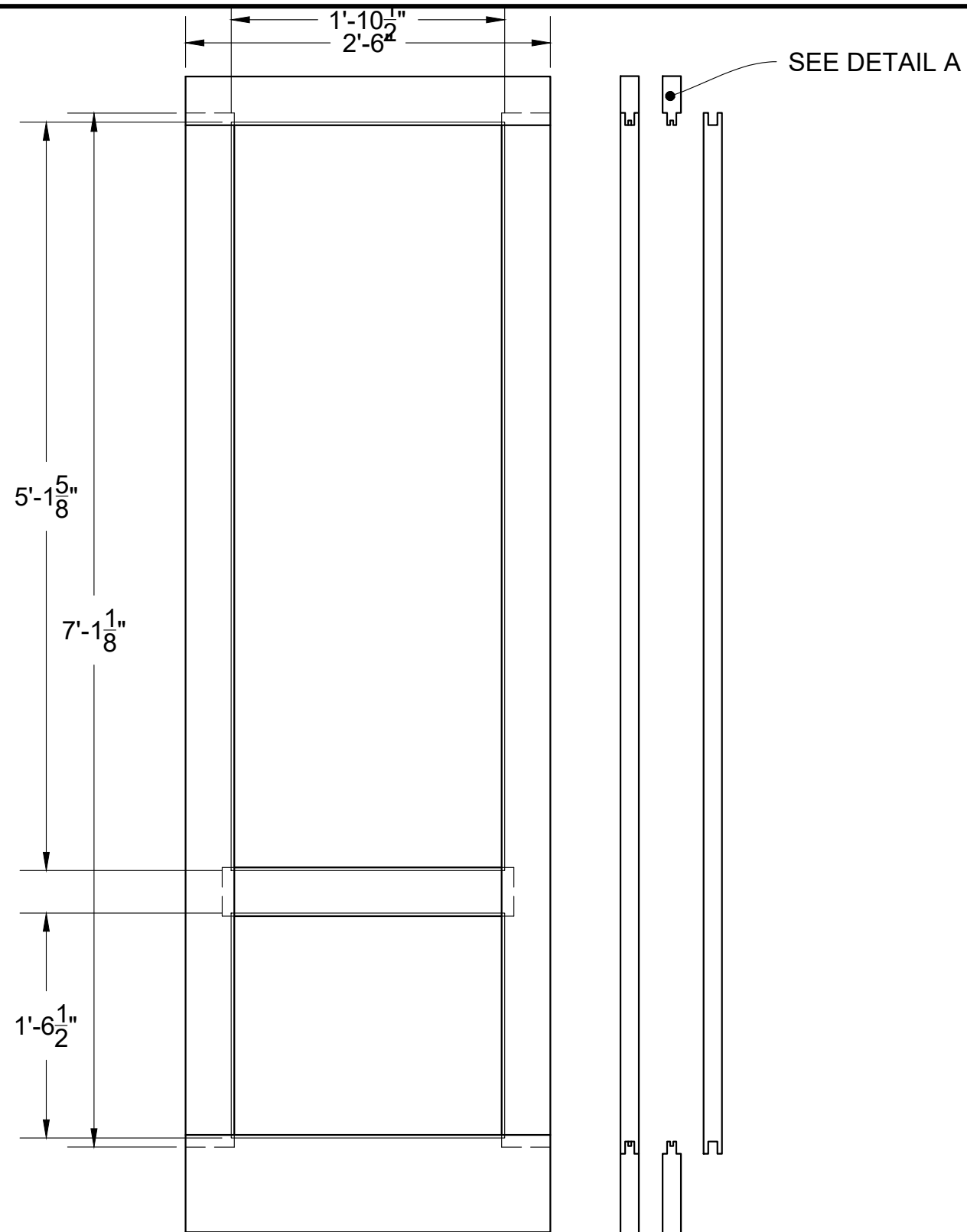
Director:
CHRISTOPHER EDWARDS

Technical Director:
FRAUSTO

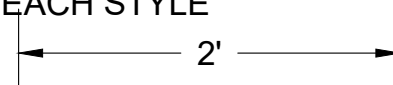
Date:
7/5/18

Scale:
VARIES

14
of
#



- NOTES:
- BUILD TWO OF EACH STYLE



FRONT AND SIDE VIEW
ASSEMBLY OF WALLS

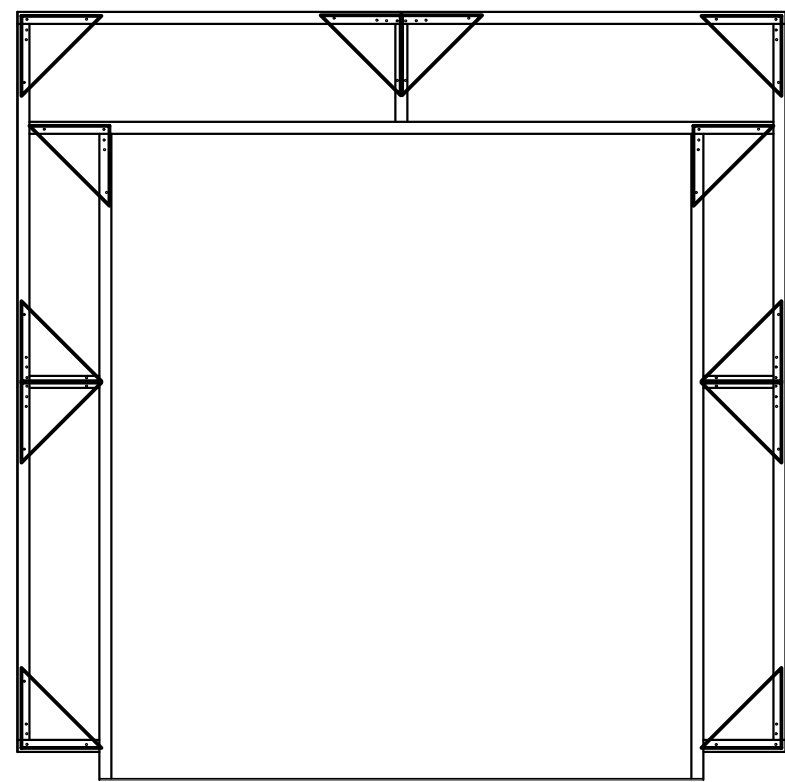
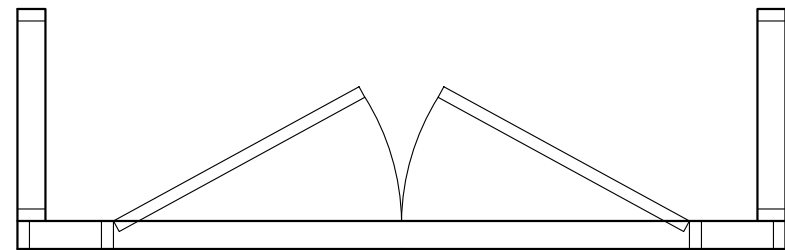
PRIDE AND PREJUDICE
DOORS OVERVIEW



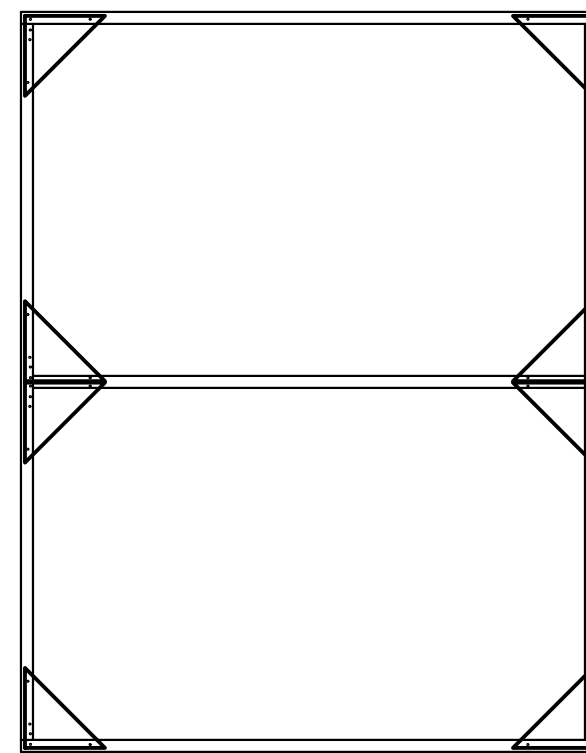
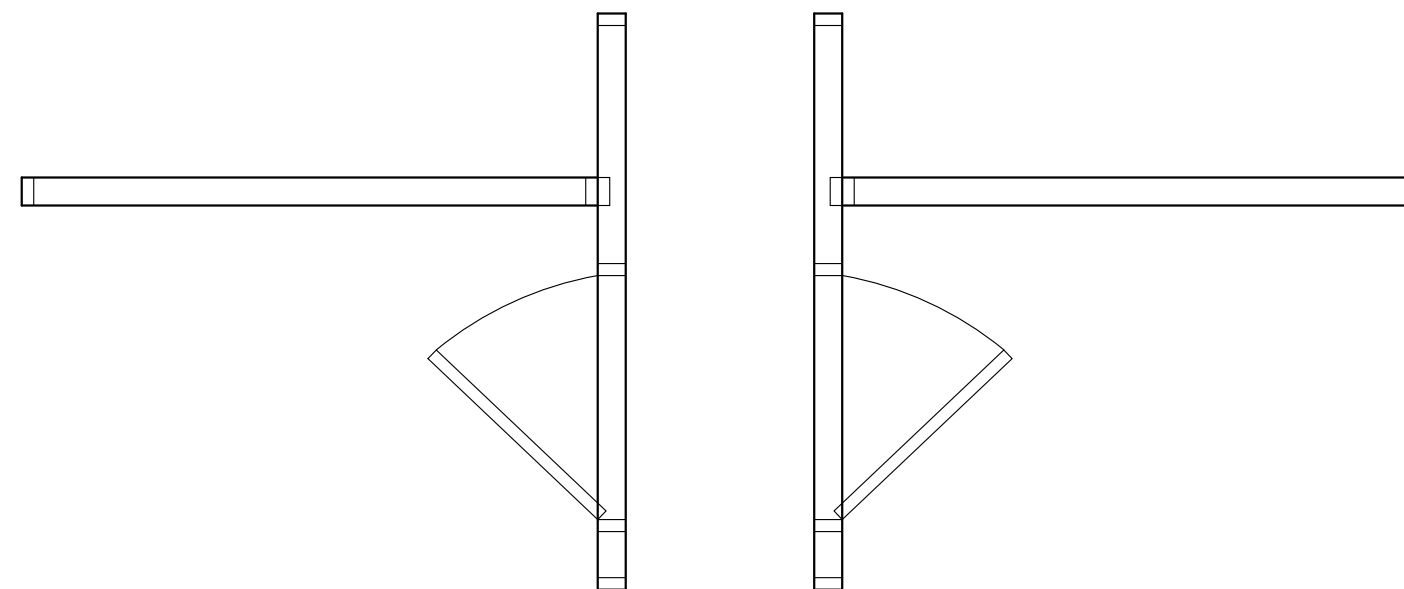
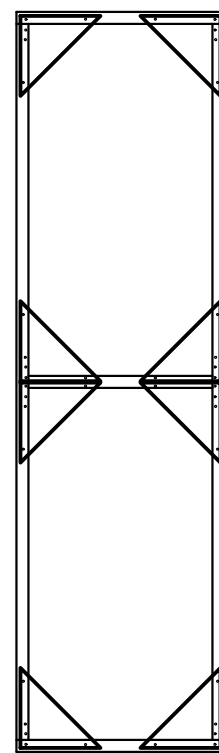
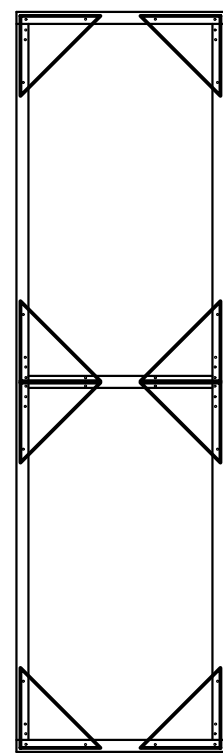
Scenic Designer:
ALEXANDER WOODWARD
Director:
CHRISTOPHER EDWARDS
Technical Director:
FRAUSTO

Date:
7/5/18
Scale:
VARIES

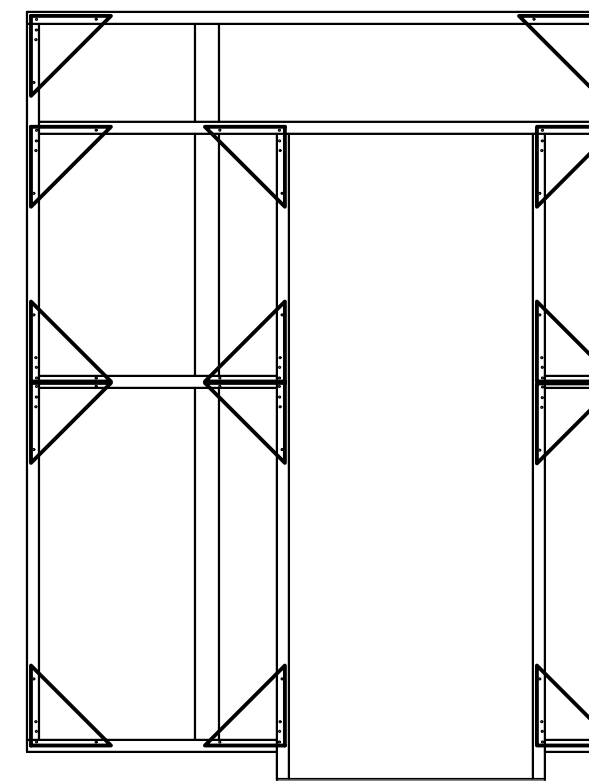
15
of
#



FRONT AND SIDE VIEW
U-WALL



FRONT AND SIDE VIEW
T-WALLS (BUILD 2)



NOTES:

- DOORS AND HARDWARE ARE FROM STOCK
- ADD CASTERS AFTER ASSEMBLED
- CORNERBLOCKS ARE FROM LAUAN OR 1/4" PLY (WHICHEVER WE HAVE MORE OF)
- BRACING TO BE ADDED AS NEEDED
- WEIGHT TO BE ADDED TO MIMIC REAL WALLS

PRIDE AND PREJUDICE

REHEARSAL WALL OVERVIEW



Scenic Designer:

ALEXANDER WOODWARD

Director:

CHRISTOPHER EDWARDS

Technical Director:

FRAUSTO

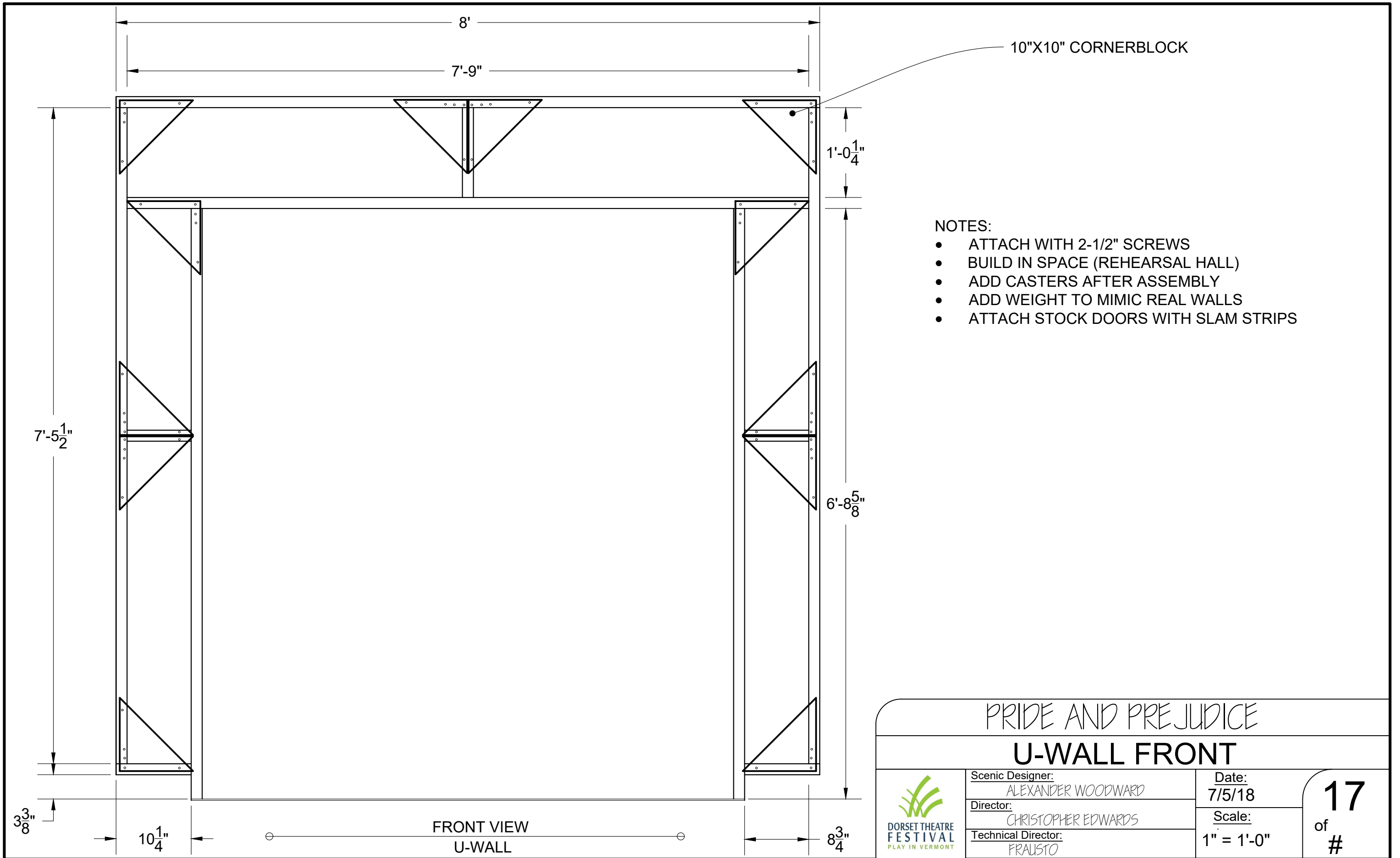
Date:

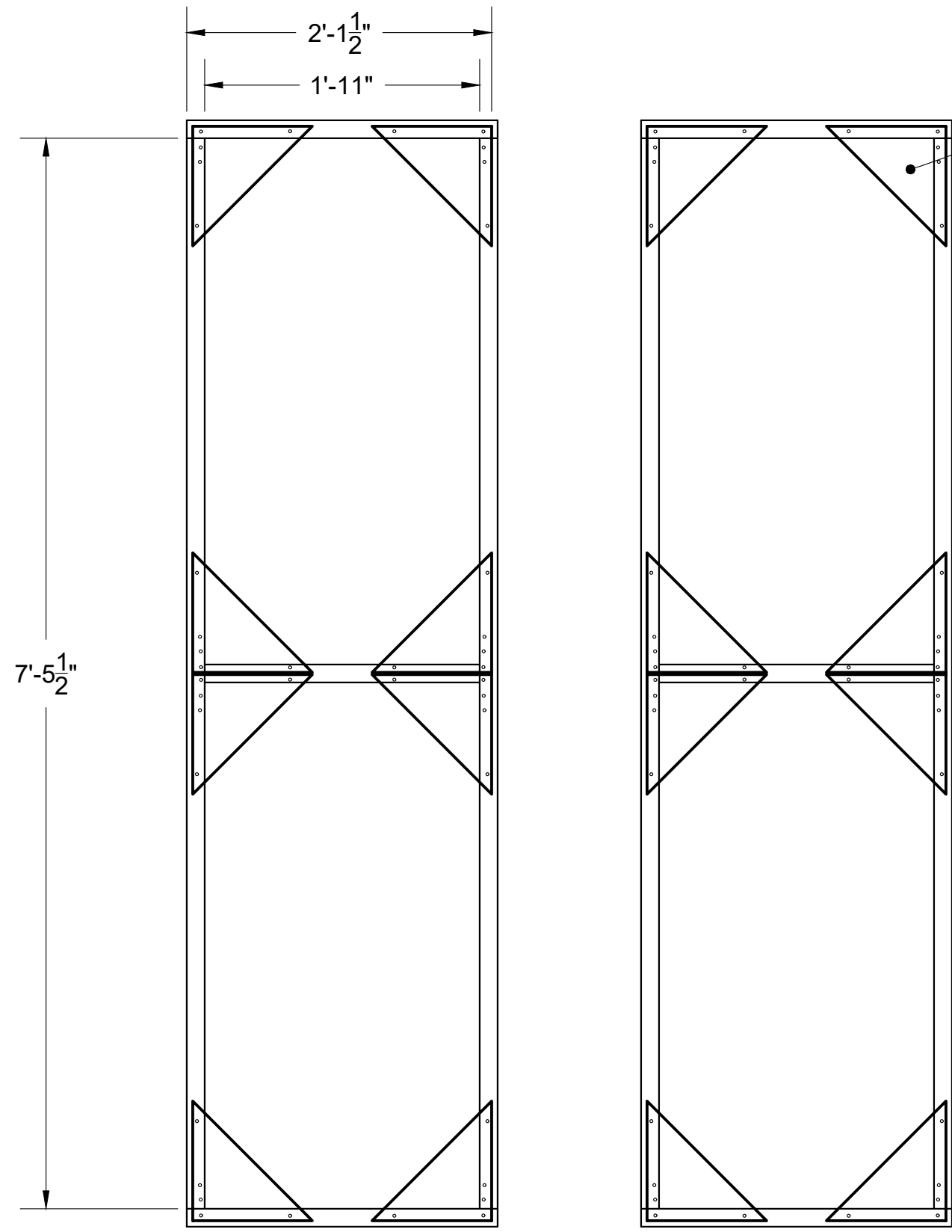
7/5/18

Scale:

1/2" = 1'-0"

16
of
#






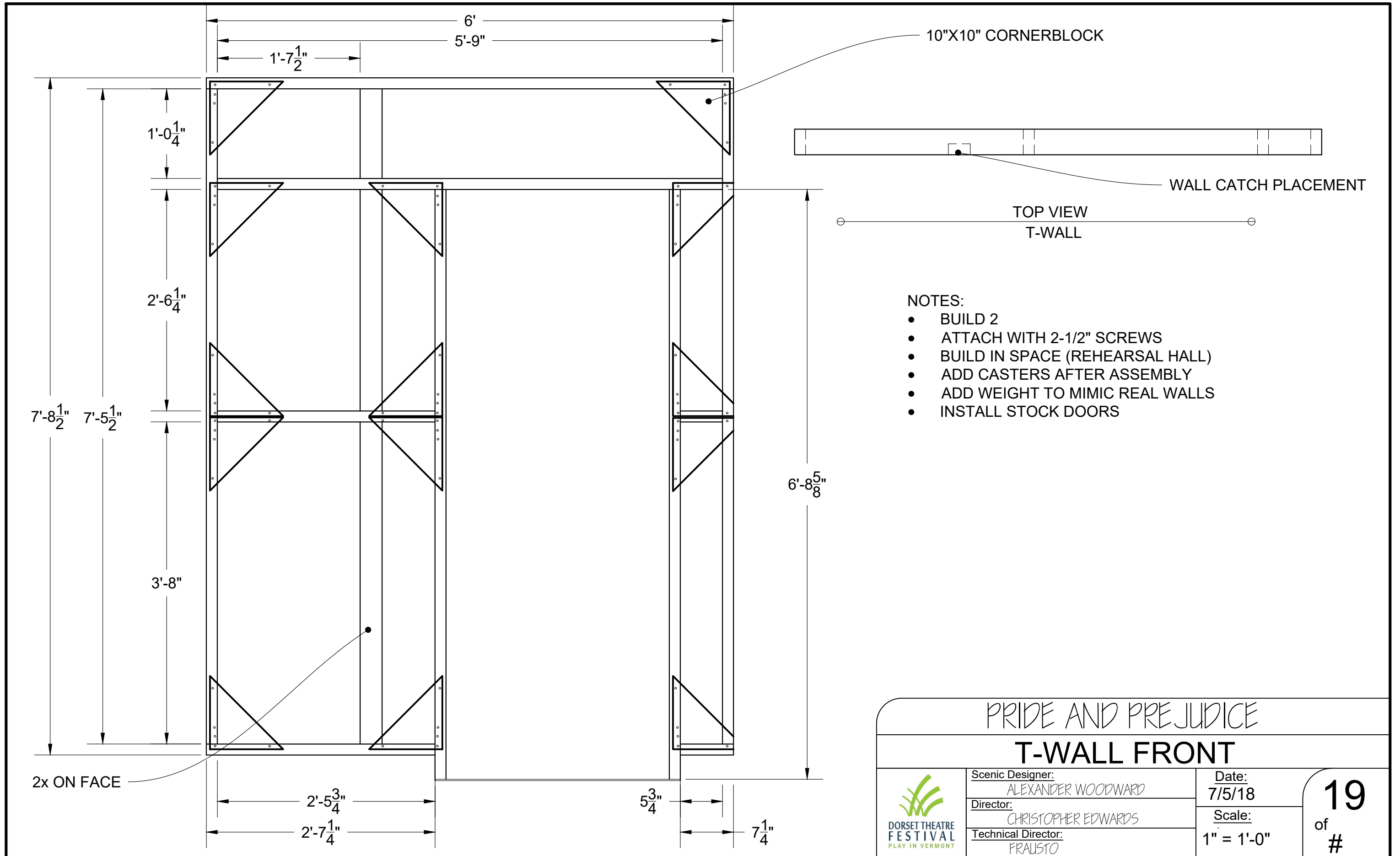
10"X10" CORNERBLOCK

NOTES:


- ATTACH WITH 2-1/2" SCREWS
- BUILD IN SPACE (REHEARSAL HALL)
- ADD CASTERS AFTER ASSEMBLY
- ADD WEIGHT TO MIMIC REAL WALLS

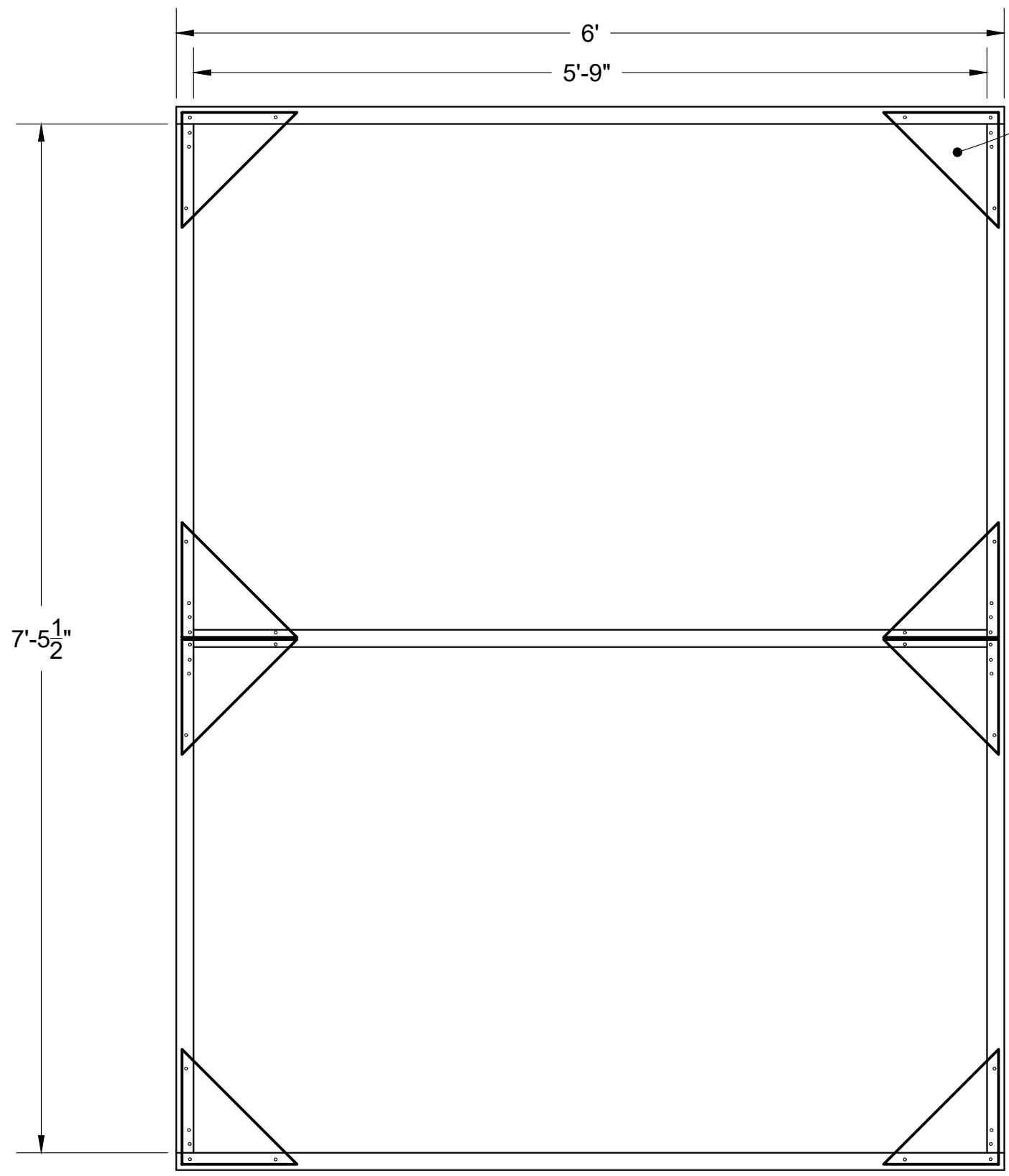
○ SIDE VIEW U-WALL ○

PRIDE AND PREJUDICE		
U-WALL SIDES		
 <p>DORSET THEATRE FESTIVAL PLAY IN VERMONT</p>	Scenic Designer: ALEXANDER WOODWARD	Date: 7/5/18
	Director: CHRISTOPHER EDWARDS	Scale: 1" = 1'-0"
	Technical Director: FRAUSTO	<div style="font-size: 2em; font-weight: bold;">18</div> <div>of #</div>



- NOTES:
- BUILD 2
 - ATTACH WITH 2-1/2" SCREWS
 - BUILD IN SPACE (REHEARSAL HALL)
 - ADD CASTERS AFTER ASSEMBLY
 - ADD WEIGHT TO MIMIC REAL WALLS
 - INSTALL STOCK DOORS


PRIDE AND PREJUDICE		
T-WALL FRONT		
 DORSET THEATRE FESTIVAL PLAY IN VERMONT	Scenic Designer: ALEXANDER WOODWARD	Date: 7/5/18
	Director: CHRISTOPHER EDWARDS	Scale: 1" = 1'-0"
	Technical Director: FRAUSTO	
		19 of #

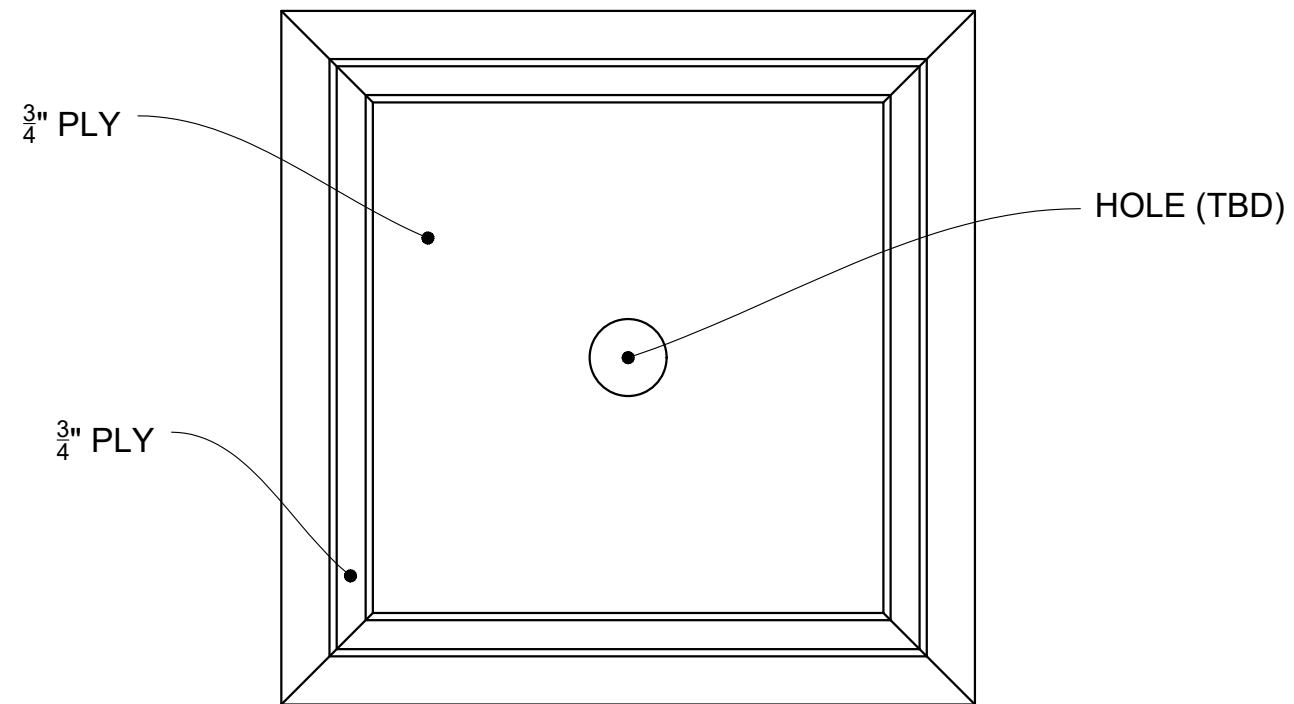


10"X10" CORNERBLOCK

- NOTES:
- BUILD 2
 - ATTACH WITH 2-1/2" SCREWS
 - BUILD IN SPACE (REHEARSAL HALL)
 - ADD CASTERS AFTER ASSEMBLY
 - ADD WEIGHT TO MIMIC REAL WALLS

○ ————— SIDE VIEW T-WALL ————— ○

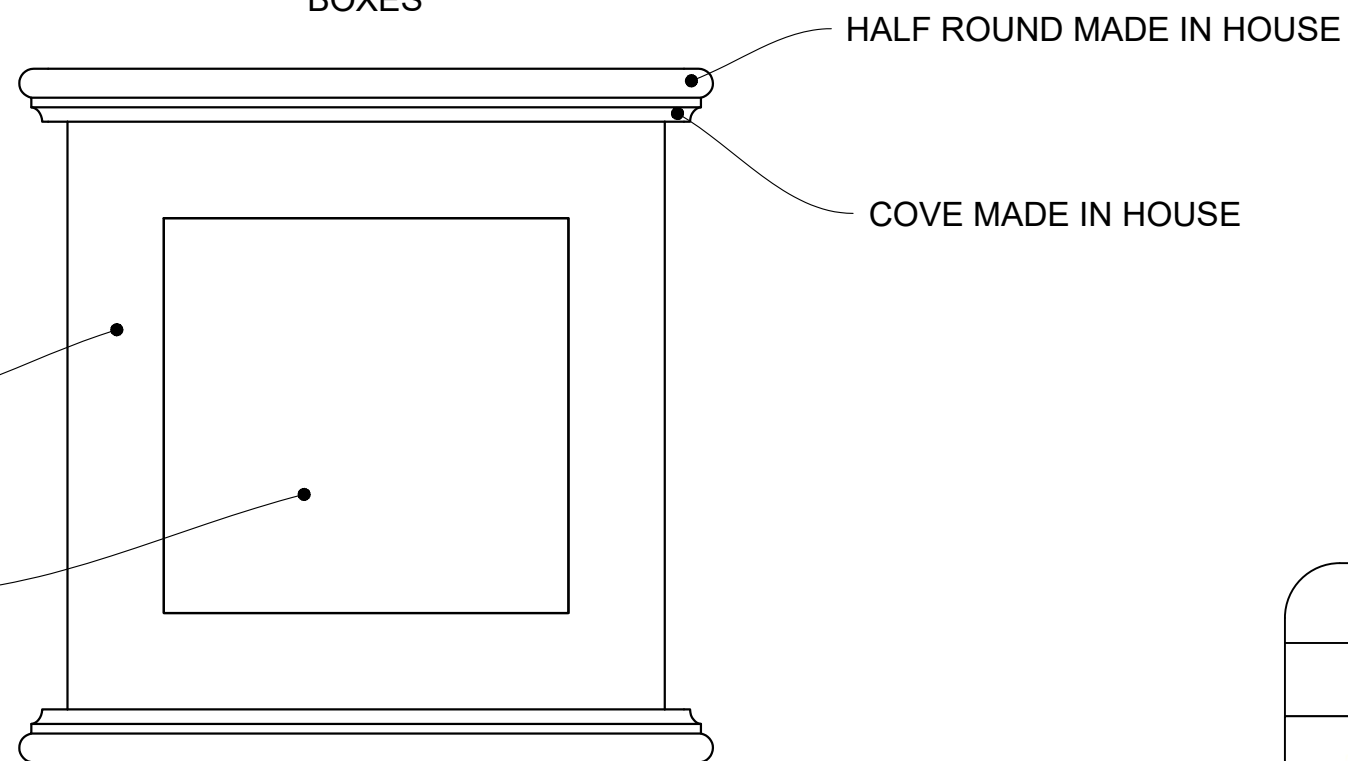
PRIDE AND PREJUDICE		
T-WALL SIDES		
 <p>DORSET THEATRE FESTIVAL PLAY IN VERMONT</p>	Scenic Designer: ALEXANDER WOODWARD	Date: 7/5/18
	Director: CHRISTOPHER EDWARDS	Scale: 1" = 1'-0"
	Technical Director: FRAUSTO	<div style="font-size: 2em; font-weight: bold;">20</div> <div style="font-size: 1.5em;">of #</div>




TOP VIEW
BOXES

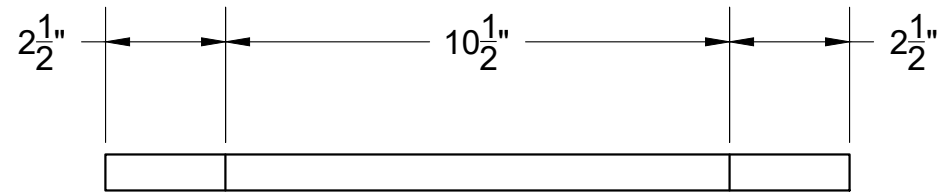
NOTES:

- BUILD 6
- ADD CASTERS AFTER ASSEMBLY



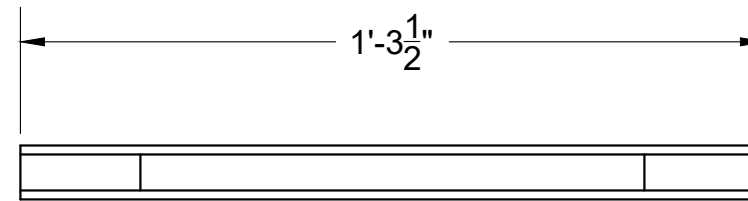
FRONT VIEW
BOXES

PRIDE AND PREJUDICE		
BOXES OVERVIEW		
 DORSET THEATRE FESTIVAL PLAY IN VERMONT	Scenic Designer: ALEXANDER WOODWARD	Date: 7/5/18
	Director: CHRISTOPHER EDWARDS	Scale: 3" = 1'-0"
	Technical Director: FRAUSTO	
		21 of #



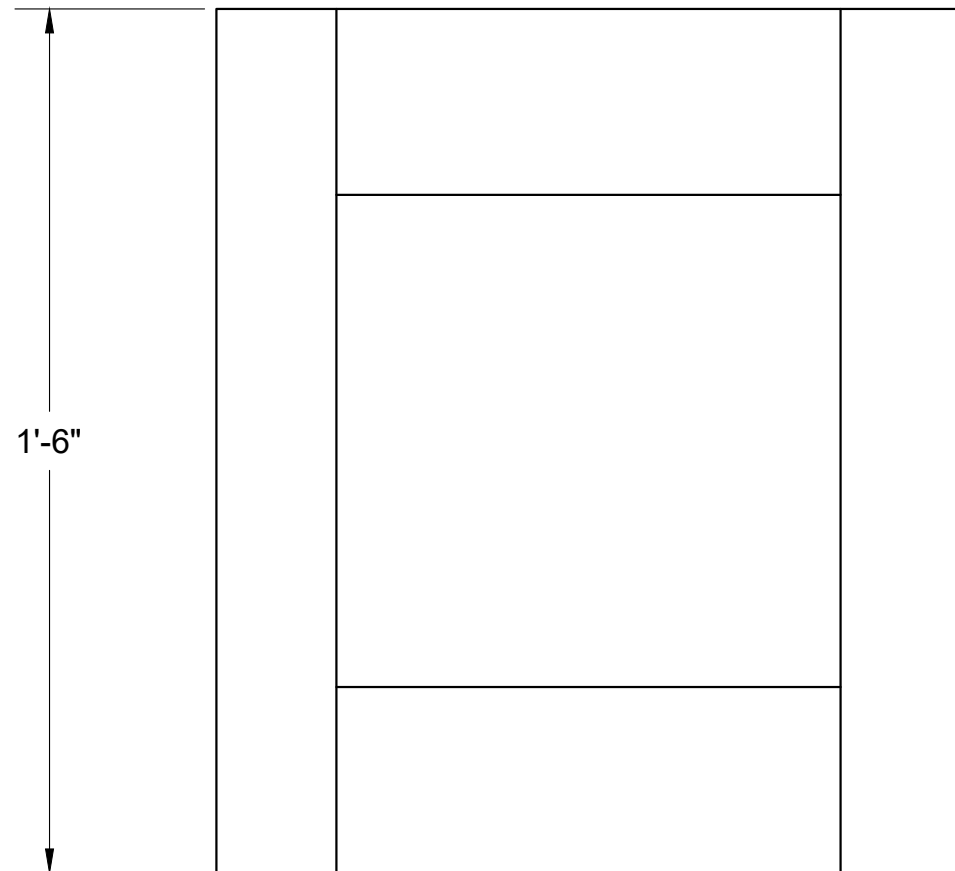
TOP VIEW

$\frac{3}{4}$ " PLY



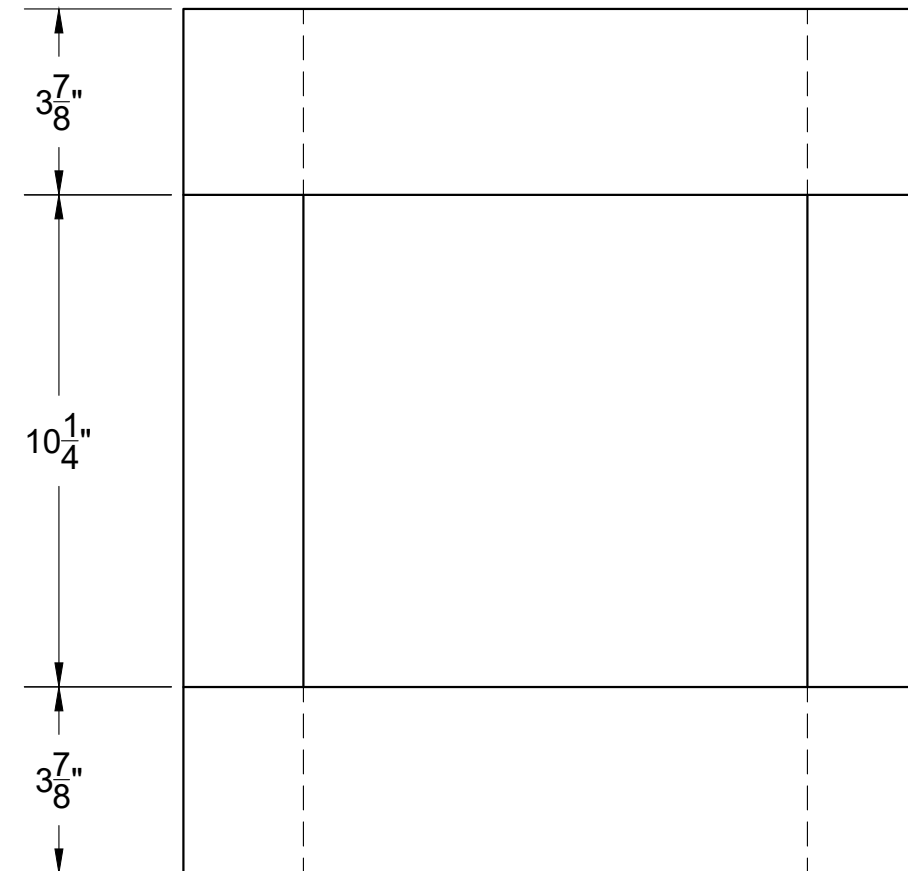
TOP VIEW

LAUAN BOTH SIDES



FRONT VIEW

$\frac{3}{4}$ " PLY



FRONT VIEW

LAUAN BOTH SIDES

NOTES:

- BUILD 24
- GLUE AND 1" BRAD ON LAUAN FOR ASSEMBLY

PRIDE AND PREJUDICE

BOX LAYERS



Scenic Designer:
ALEXANDER WOODWARD

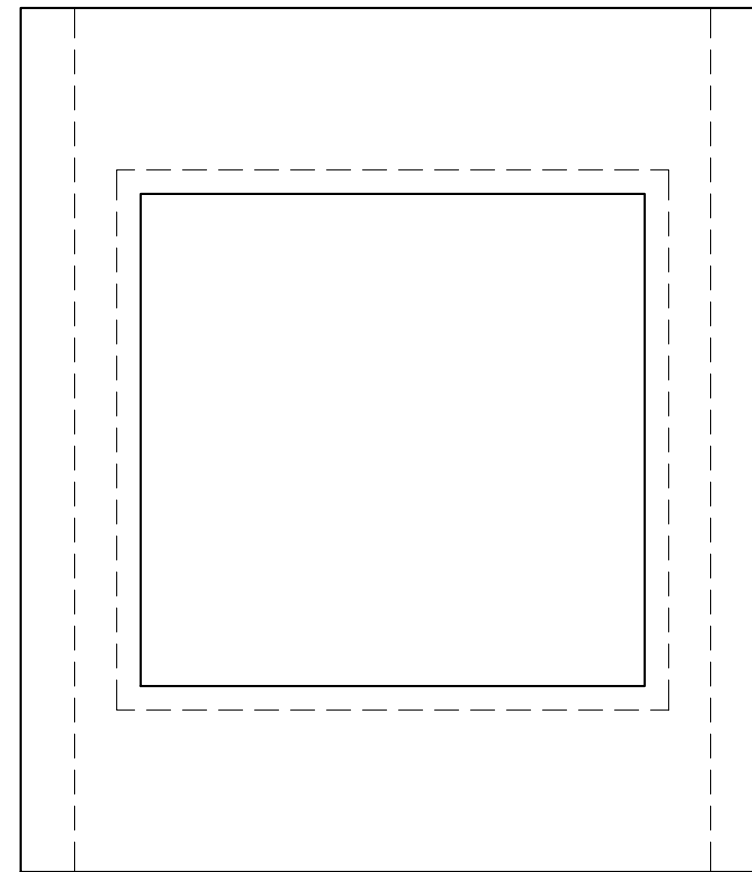
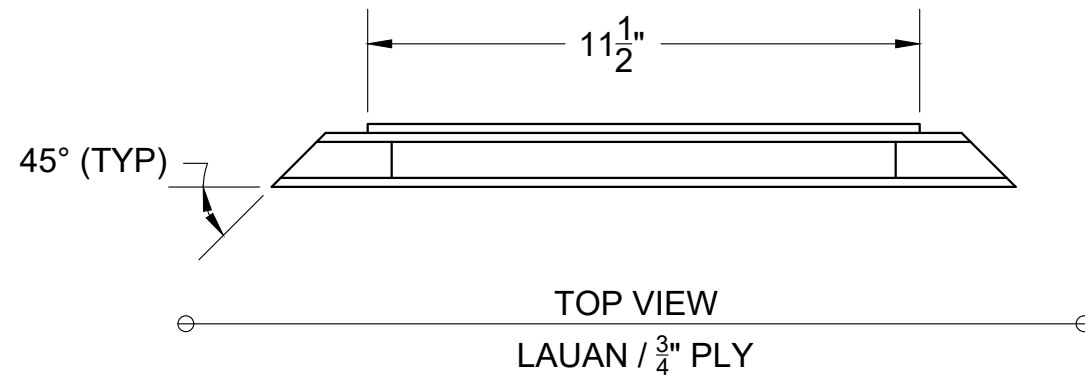
Director:
CHRISTOPHER EDWARDS

Technical Director:
FRAUSTO

Date:
7/5/18


Scale:
3" = 1'-0"

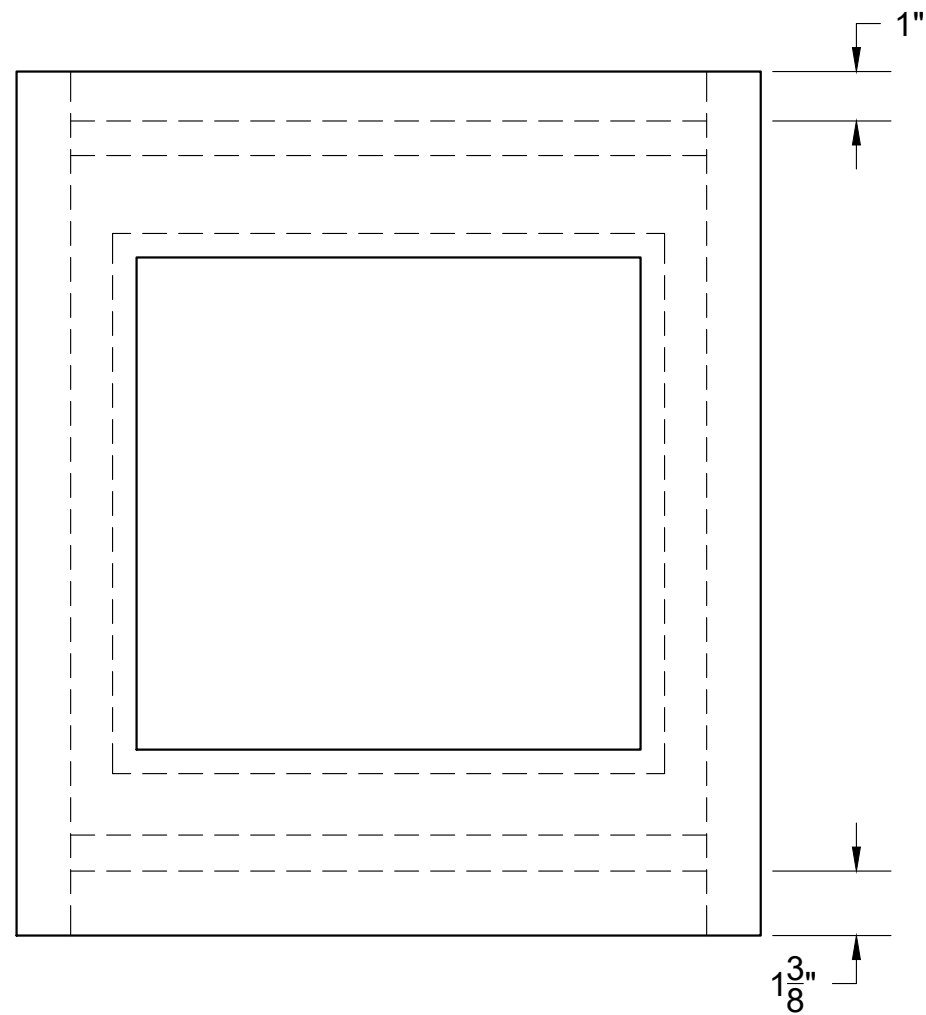
22
of
#



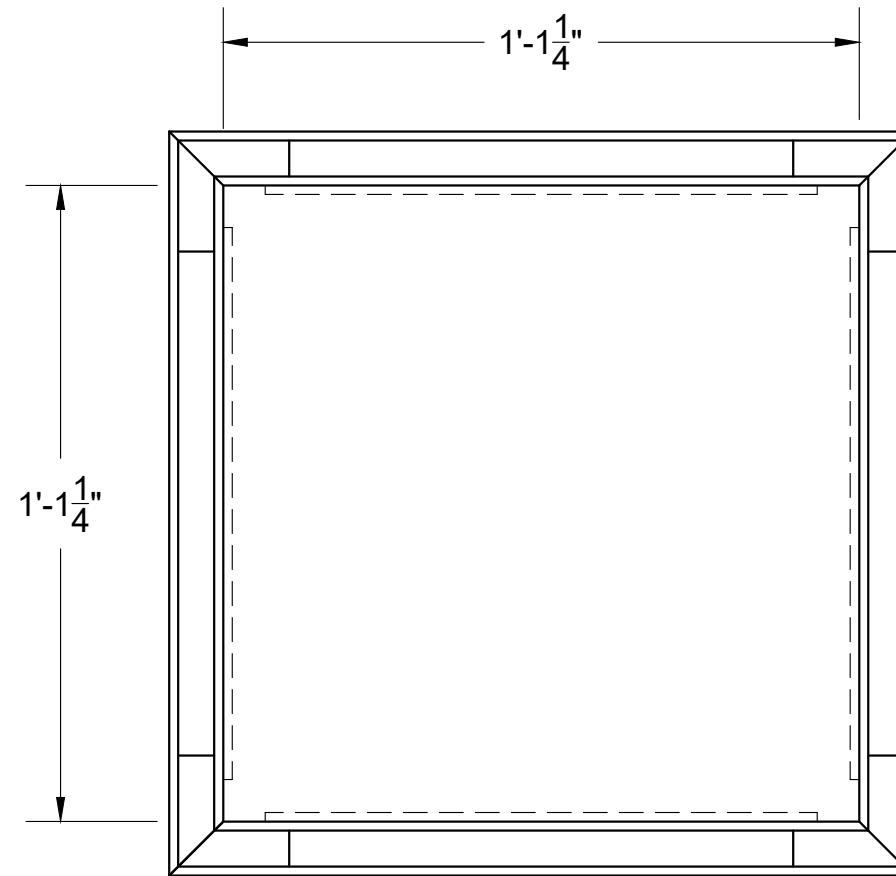
NOTES:

- ADD LAUAN **AFTER** 45° HAS BEEN CUT
- USE 1" BRAD AND GLUE FOR ASSEMBLY
- DO THIS FOR ALL 24 PANELS

PRIDE AND PREJUDICE		
BOX LAYERS CONT.		
 DORSET THEATRE FESTIVAL PLAY IN VERMONT	Scenic Designer: ALEXANDER WOODWARD	Date: 7/5/18
	Director: CHRISTOPHER EDWARDS	Scale: 3" = 1'-0"
	Technical Director: FRAUSTO	<div style="font-size: 2em; font-weight: bold;">23</div> of #



FRONT VIEW



TOP VIEW

NOTES:

- RIP/CUT $\frac{3}{4}$ " PLY BLOCKS FOR ASSEMBLY
- PAY ATTENTION TO PLACEMENT... SERIOUSLY
- USE GLUE AND 1-1/2" NCS (100 PSI)
- PUTTY SEAMS AFTER ASSEMBLY

PRIDE AND PREJUDICE

BOX ASSEMBLY



Scenic Designer:
ALEXANDER WOODWARD

Director:
CHRISTOPHER EDWARDS

Technical Director:
FRAUSTO

Date:
7/5/18

Scale:
3" = 1'-0"

24
of
#